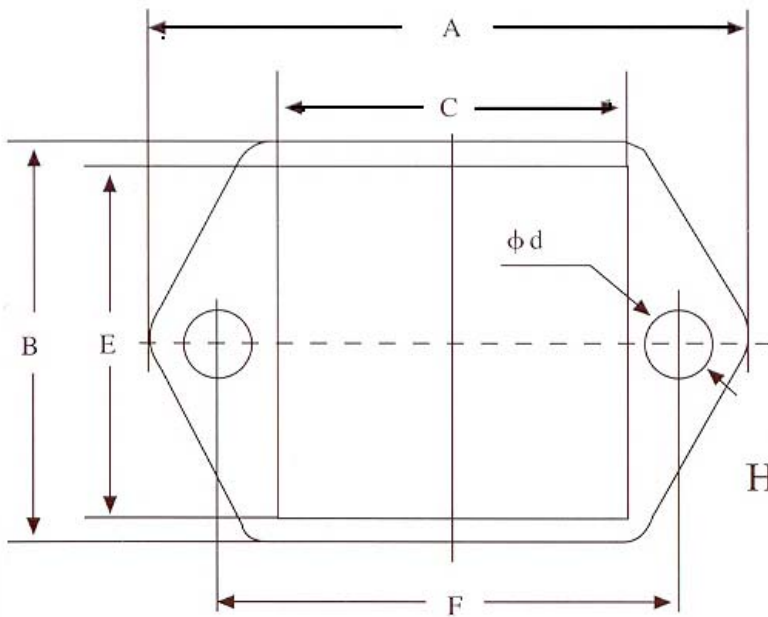


H10A, H16A, H32A
H6B, H10B, H16B, H24B, H32B, H48B
series housings



H3A housing

Housing Type	Mounting Type	Dimensions (mm)							Housing Type	Mounting Type	Dimensions (mm)						
		A	B	C	E	F	G	Φd			A	B	C	E	F	G	Φd
H3A	bulkhead	40	28	21	21	30	---	3.3	H10B	bulkhead	93	43	65.2	35	32	83	4.3
	surface	40	28	---	---	30	---	3.3		surface	94	52	---	---	40	82	5.5
H10A	bulkhead	81	29.5	57.5	24	17.5	70	3.6	H16B	bulkhead	113	43	85.5	35	32	103	4.3
	surface	80	50	---	---	40	48	4.5		surface	117	57	---	---	45	105	5.5
H16A	bulkhead	96	29.5	73.7	24	17.5	86	3.6	H24B	bulkhead	140	43	112.2	35	32	130	4.3
	surface	96	50	---	---	40	64	4.5		surface	144	57	---	---	45	132	5.5
H32A	bulkhead	102	56	74.2	48.4	42	92	4.3	H32B	bulkhead	124	79	85.5	71	65	110	5.5
	surface	106	57	---	---	46	94	5.5		surface	124.5	81	---	---	67	112	5.5
H6B	bulkhead	80	43	52.2	35	32	70	4.3	H48B	bulkhead	165	90	124	82	70	148	7
	surface	84	52	---	---	40	70	5.5		surface	132	120	---	---	106	111	6.5