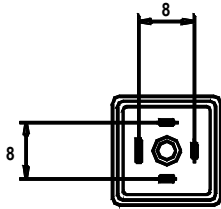


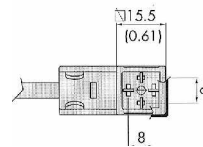
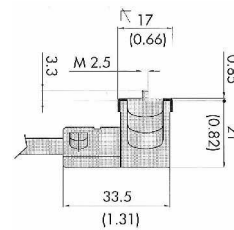
DIN 43650C – 8mm Molded Cable Assemblies For Solenoid Valve Applications



DUAL JUMPED GROUND PINS – Molded cable assemblies can be mounted with cable exiting the ground side or opposite.

* Four wire units have one ground pin and 3 “U” shaped pins. Cable exit direction must be specified.

Molded Cable Assemblies Black PVC Cable & Connector



3 Pole (3 Flat Pins)

Part Numbers	Cable Length	Pole	
0 to 250 VAC/DC Without LED & Suppression	3 Meter (9.8 Feet)	3	CP1-N02-000-C01-3
	5 Meter (16.4 Feet)	3	CP1-N02-000-C01-5
	3 Meter (9.8 Feet)	4*	
	5 Meter (16.4 Feet)	4*	
12 to 24 VAC/DC With LED & Suppression	3 Meter (9.8 Feet)	3	CP1-N02-VL1-C01-3
	5 Meter (16.4 Feet)	3	CP1-N02-VL1-C01-5
110 to 120 VAC/DC With LED & Suppression	3 Meter (9.8 Feet)	3	CP1-N02-VL2-C01-3
	5 Meter (16.4 Feet)	3	CP1-N02-VL2-C01-5

Technical Information

Connection Voltage	As Listed in Drawing	Cable Type	H03VVF
Nominal Power	3A	Jacket Material	Black PVC
Test Voltage	250VAC - 300 VDC max.	Conductor Size	20/3 AWG
Insulation Group	VDC 0110 1/89 Class C	Conductor Color	Brn, Blue, (Blk), Grn/Yel
Clamping Voltage 24V	34V	Nominal Cable OD	6.7mm
Clamping Voltage 110V	185V	Bend Radius	10 X Cable OD
Connector Material	Glass Reinforced Polypropylene	Center Screw	M2.5 x 21.5mm
Protection Rating	IP 65; IP 67 on Request	Temperature Range	-2° to +176° F
Contact Resistance	≤ 4 mΩ		

To locate additional product specifications and technical drawings go to www.asi-ez.com