

Extruded Printed Circuit Board Tray

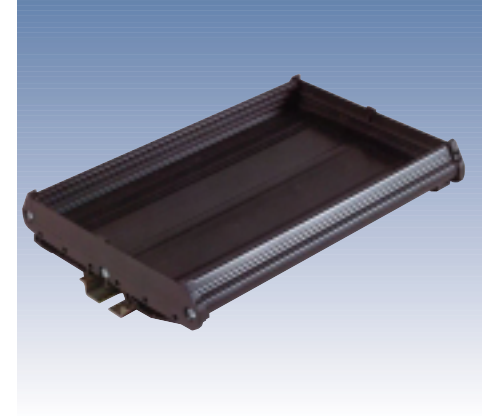
The ET series of extruded printed circuit board trays can accommodate circuit boards in widths of 2.56" / 2.83" / 3.94" / 4.21".

The ET series of trays can either be mounted to a standard DIN rail using the mounting feet or directly on a back panel using the panel mounting ears.

Trays can be ordered as raw extrusion, which can be cut to length. Alternately, ASI's value-added department can cut trays to specified lengths and can even provide complete tray kits.



ET 72



ET 107

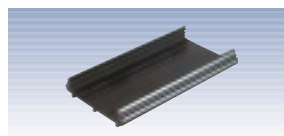
ORDERING INFORMATION	TYPE	CATALOG No.	Pcs/PKG	TYPE	CATALOG No.	Pcs/PKG
Extruded tray,						
3 foot tray	ET72-36.00	20360	1	ET107-36.00	21360	1
Pre-cut tray *	ET72-xx.xx		5	ET107-xx.xx		5
Pre-assembled kit *	ET72K-xx.xx		10	ET107K-xx.xx		10
End cover, includes mounting screws	ET72EC	20370	10	ET107EC	21370	10
Panel mounting ear	ET-PME	20373	10	ET-PME	20373	10
DIN rail mounting foot	ET72MF	20371	10	ET107MF	21371	10
Reducing spacer						
for 2.56" (65mm) board	ET72 x 65	20372	10	—		
for 3.94" (100mm) board	—			ET107 x 100	21372	10

ACCESSORIES	TYPE	CATALOG No.	Pcs/PKG	TYPE	CATALOG No.	Pcs/PKG
End stop, width .31" (8mm)						
universal	BTU	BT005	25	BTU	BT005	25
35mm rail only	BT/3	BT003	25	BT/3	BT003	25
Mounting rail, DIN (2 meter length)						
non-slotted symmetrical 35mm x 7.5mm	PR/3/AC	PR003	1	PR/3/AC	PR003	1
slotted symmetrical 35mm x 7.5mm	PR/3/AS	PR005	1	PR/3/AS	PR005	1
non-slotted symmetrical 35mm x 15mm	PR/3/PP	PR007	1	PR/3/PP	PR007	1
slotted symmetrical 35mm x 15mm	PR/3/PA	PR006	1	PR/3/PA	PR006	1

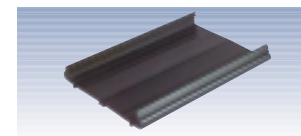
GENERAL DATA	GENERAL DATA	GENERAL DATA
Material: tray	PVC	PVC
Material: feet, end cover	Polyamide 6.6	Polyamide 6.6
Operating temperature	0° C to 80° C	0° C to 80° C
Flammability rating: tray	UL94 V1	UL94 V1
Flammability rating: feet, end cover	UL94 V0	UL94 V0

* Note: To order pre-cut tray or pre-assembled tray kit, add board length to be placed in tray on end of number in inches. Show length in four-digit format.

Example: board length = 2.53"
pre-assembled kit = ET72K-02.53



ET 72-xx.xx



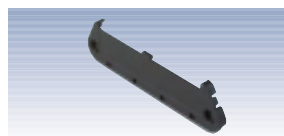
ET 107-xx.xx



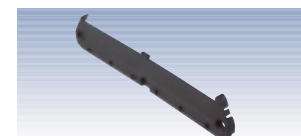
ET 72-MF



ET 107-MF



ET 72-EC



ET 107-EC

To locate additional product specifications and technical drawings go to www.asi-ez.com