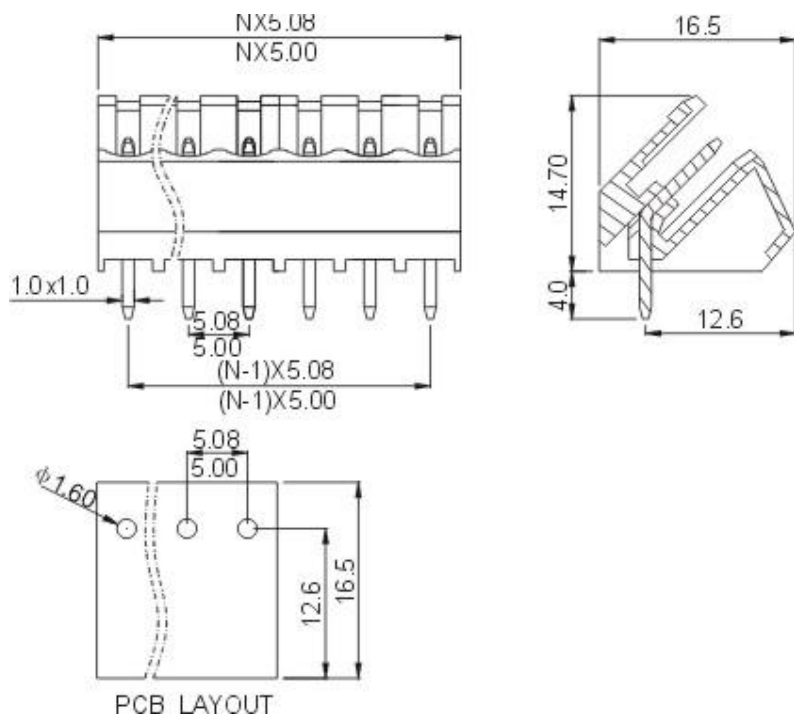
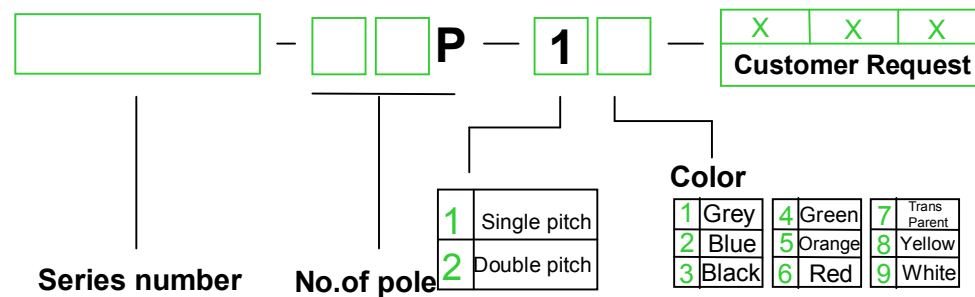


<b>APPROVAL</b>		
<b>Electrical</b>	<b>UL</b>	<b>IEC</b>
Standard	300V	320V
Rated voltage	15A	20A
Rated current	AC2000V/1Min	
Withstanding voltage		
<b>Mechanical</b>		
Ambient temperature	-40 ~+105	
<b>Dimensions</b>		
Pitch	5.0mm(.197" ) 5.08mm(.200" )	
Poles	2P-24P	
<b>Material</b>		
Housing	PA66,UL94 V-0	
Pin header	Brass,Tin plated	



### HOW TO ORDER :



  <small>THROUGH-HOLE PROJECTION</small>	<a href="http://www.asi-ez.com">www.asi-ez.com</a>  <b>NAME</b> <b>2EDGL-5.0 2EDGL-5.08</b>
--	--