

# 22mm Push buttons and pilot devices

## Metal series

### Push-push button operators



8 LM2T Q10...



8 LM2T Q20...

Color	Qty per pkg	Catalog number
Flush (without mounting adapter). Maintained, push to release.		
Black	10	8 LM2T Q102Ⓢ
Green	10	8 LM2T Q103Ⓢ
Red	10	8 LM2T Q104Ⓢ
Yellow	10	8 LM2T Q105Ⓢ
Blue	10	8 LM2T Q106Ⓢ
White	10	8 LM2T Q108Ⓢ
Extended (without mounting adapter). Maintained, push to release.		
Black	10	8 LM2T Q202Ⓢ
Green	10	8 LM2T Q203Ⓢ
Red	10	8 LM2T Q204Ⓢ
Yellow	10	8 LM2T Q205Ⓢ
Blue	10	8 LM2T Q206Ⓢ
White	10	8 LM2T Q208Ⓢ

Ⓢ Use only the early-make type, 8 LM2T C10A.  
No normally open contact element, 8 LM2T C10, must be used with this type of button operator.  
A maximum of 2 contact elements can be mounted only.

### Mushroom head push-button operators



8 LM2T B6144



8 LM2T B6164



8 LM2T B6244



8 LM2T B6344



8 LM2T B6544



8 LM2T B6644

Color	Qty per pkg	Catalog number
<b>Momentary. Ø 40 mm (1.6in) (without mounting adapter).</b>		
Black	10	8 LM2T B6142
Green	10	8 LM2T B6143
Red	10	8 LM2T B6144
Yellow	10	8 LM2T B6145
Blue	10	8 LM2T B6146
<b>Momentary. Ø 60 mm (2.4in) (without mounting adapter).</b>		
Black	10	8 LM2T B6162
Green	10	8 LM2T B6163
Red	10	8 LM2T B6164
Yellow	10	8 LM2T B6165
Blue	10	8 LM2T B6166
<b>Maintained, pull to release. Ø 40 mm (1.6in) (without mounting adapter).</b>		
Black	10	8 LM2T B6242
Red	10	8 LM2T B6244
<b>Maintained, twist to release. Ø 40 mm (1.6in) (without mounting adapter).</b>		
Black	10	8 LM2T B6342
Red	10	8 LM2T B6344
<b>Maintained, twist key to release. Ø 40 mm (1.6in), keyed (without mounting adapter).</b>		
Black	10	8 LM2T B6542
	1	8 LM2T B6542G...Ⓢ
Red	10	8 LM2T B6544
	1	8 LM2T B6544G...Ⓢ
<b>Maintained, twist to release, mechanical latching EN418 compliant. Ø 40 mm (1.6in) (without mounting adapter).</b>		
Red	10	8 LM2T B6644

Ⓢ Versions with different key codes.  
Complete with the numeric code of the key. The following versions are available:  
501, 502, 503, 504, 505, 506, 507, 508, 509, 510.  
Example of complete catalog number: 8 LM2T B6542G505.

### Operational characteristics

- Ambient operating temperature: -10 to +140°F (-25 to +60°C)
- Ambient storage temperature: -40 to +160°F (-40 to +70°C)
- Any mounting position is allowed
- Degree of protection: IP66 (IP65 only for LM2T B654... operator).

### Reference standards

Compliant with standards: IEC/EN 60947-1, IEC/EN 60947-5-1.

### Materials

An aluminium and zinc alloy (zama) is used for the metal part whereas plastic parts are made of polyamide and polycarbonate.

### Mechanical endurance

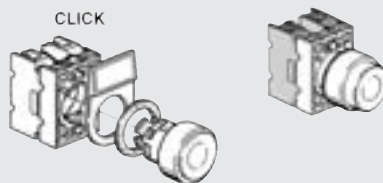
Operating force: 1.76lb / 0.8kg (operator).  
Mechanical life for alternate-push operators: 500,000 cycles.  
Mechanical life for mushroom head buttons: 1,000,000 cycles.  
Mechanical life for mushroom head latch buttons: 300,000 cycles.

### Mounting adapter

See page 6-17.  
Catalog number: 8 LM2T AU120.  
Operators latch onto the mounting adapter with a simple rotation.  
The adapter is fixed to the mounting surface by means of incorporated screws (Tmax = 7.14in lb / 0.8 Nm).

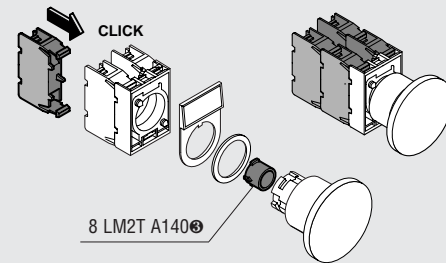
### Auxiliary contacts for push-push operators

See page 6-17.  
Auxiliary contacts snap onto the mounting adapter.  
Catalog numbers: 8 LM2T C10A (EM)  
8 LM2T C01 (1NC)  
Up to 2 auxiliary contacts can be fitted on the mounting adapter: 1 each on the right and left.



### Auxiliary contacts for mushroom-head button operators

Catalog numbers: 8 LM2T C10 (1NO)  
8 LM2T CF10 (1NO Faston)  
8 LM2T C10A (EM)  
8 LM2T C01 (1NC)  
8 LM2T CF01 (1NC Faston)  
8 LM2T C01D (LB)  
Up to 4 auxiliary contacts can be fitted on the mounting adapter with LM2T B624... and LM2T B6644 types.  
Up to 6 auxiliary contacts can be fitted on the mounting adapter with all the other types: 2 on the left, 2 at the center LM2T A140 (see page 6-21).  
To mount the auxiliary contacts in the center position on LM2T B614... and LM2T B616... types only, use the action plug LM2T A140 (see page 6-21).



Ⓢ The action plug LM2T A140 for the center position is not standard supplied and must be purchased separately.

To locate additional product specifications and technical drawings go to [www.asi-ez.com](http://www.asi-ez.com)