

# 22mm control and signalling units

## Metal series

### Joysticks



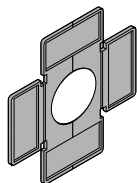
8 LM2T J200  
without mechanical interlock



8 LM2T J410  
with mechanical interlock

Type of positions	N° auxiliary contacts	Qty per pkg	Catalog number
Without mechanical interlock. Label holder excluded. Complete with auxiliary contacts.			
	2	1	8 LM2T J200
	2	1	8 LM2T J201
	4	1	8 LM2T J400
	4	1	8 LM2T J401
With mechanical interlock in center position. Label holder excluded. Complete with auxiliary contacts.			
	2	1	8 LM2T J210
	2	1	8 LM2T J211
	4	1	8 LM2T J410
	4	1	8 LM2T J411

### Accessories



8 LM2T AU101

Description	Qty per pkg	Catalog number
2-4 directional holder for adhesive legends	10	8 LM2T AU101

#### Operational characteristics

- Ambient operating temperature: -40 to +140°F (-25 to +60°C)
- Ambient storage temperature: -40 to +160°F (-40 to +70°C)
- Any mounting position is allowed
- Degree of protection: IP65.

#### Certifications and compliance

Certifications obtained: cULus pending.  
Compliant with standards: IEC/EN 60947-1, IEC/EN 60947-5-1.

#### Materials

An aluminium and zinc alloy (zama) is used for the metal parts whereas plastic parts are made of polyamide and polycarbonate.  
The sealing boot is made of NBR rubber.

#### Mechanical endurance

Mechanical life: 1,000,000 cycles

#### Mounting adapter and auxiliary contacts

The joystick is standard supplied with the mounting adapter and auxiliary contacts.

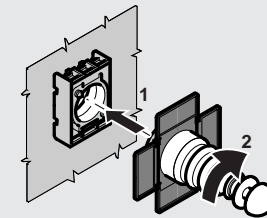
The joystick latches onto the mounting adapter with a simple rotation.

The adapter is fixed to the mounting surface by means of incorporated screws (Tmax = 7.1 in lb / 0.8Nm).

Auxiliary contacts snap onto the mounting adapter. Two LM2T CJ contacts are mounted with the LM2T J2 types while four on the LM2T J4 versions.

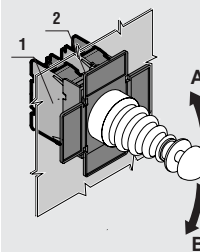
Terminal tightening torque: 8.8 in lb / 1Nm.

UL designation: A/300, Q/300.

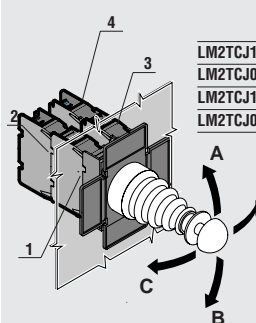


#### Joystick positions and contact energizing

• 2 instable • 2 maintained - • 4 instable - • 4 maintained



		↑ A	↓ B
LM2TCJ10	1	•	
	2		•



		↑ A	↓ B	← C	→ D
LM2TCJ10	1	•			
LM2TCJ01	2		•		
LM2TCJ10	3				•
LM2TCJ01	4			•	

To locate additional product specifications and technical drawings go to [www.asi-ez.com](http://www.asi-ez.com)