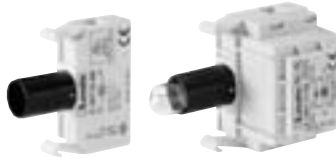


22mm Push buttons and pilot devices

Lamp-holders

Lamp-holders without mounting adapter



8 LM2T EL400
8 LM2T ZL230
8 LM2T YL
8 LM2T GL



8 LM2T T100

Voltage	Bulb supplied	Qty per pkg	Catalog number
For operators of plastic and metal series.			
Direct supply type			
≤415V	no	10	8 LM2T EL400①
Resistor-diode type			
230V 50/60Hz	yes 130V (2W)	10	8 LM2T ZL230②
Transformer type			
110-120V 50/60Hz	yes 24V (1.2W)	1	8 LM2T YL110③
220-240V 50/60Hz	yes 24V (1.2W)	1	8 LM2T YL230③
380-415V 50/60Hz	yes 24V (1.2W)	1	8 LM2T YL400③
Flashing type			
24-48V	no	1	8 LM2T GL048④⑤
110-230V	no	1	8 LM2T GL230④⑤
Test element for lamp-holders			
Test element	⑥⑦	10	8 LM2T T100

Lamp-holders with mounting adapter



8 LM2T DL400
8 LM2T VL230



8 LM2T XL
8 LM2T FL

Voltage	Bulb supplied	Qty per pkg	Catalog number
Only for operators of metal series.			
Direct supply type			
≤415V	no	10	8 LM2T DL400①
Resistor-diode type			
230V 50/60Hz	yes 130V (2W)	10	8 LM2T VL230②
Transformer type			
110-120V 50/60Hz	yes 24V (1.2W)	1	8 LM2T XL110③
220-240V 50/60Hz	yes 24V (1.2W)	1	8 LM2T XL230③
380-415V 50/60Hz	yes 24V (1.2W)	1	8 LM2T XL400③
Flashing type			
24-48V	no	1	8 LM2T FL048④⑤
110-230V	no	1	8 LM2T FL230④⑤

LED integrated lamp-holders without mounting adapter. Steady or flashing light.



8 LM2T LM3

Voltage	LED color	Catalog number for steady	Catalog number for flashing
18-30V AC/DC	Green	8 LM2T LB3	8 LM2T MB3
	Red	8 LM2T LB4	8 LM2T MB4
	Yellow	8 LM2T LB5	8 LM2T MB5
	Blue	8 LM2T LB6	8 LM2T MB6
	White	8 LM2T LB8	8 LM2T MB8
85-140V AC/DC	Green	8 LM2T LE3	8 LM2T ME3
	Red	8 LM2T LE4	8 LM2T ME4
	Yellow	8 LM2T LE5	8 LM2T ME5
	Blue	8 LM2T LE6	8 LM2T ME6
	White	8 LM2T LE8	8 LM2T ME8
187-265V AC/DC	Green	8 LM2T LM3	8 LM2T MM3
	Red	8 LM2T LM4	8 LM2T MM4
	Yellow	8 LM2T LM5	8 LM2T MM5
	Blue	8 LM2T LM6	8 LM2T MM6
	White	8 LM2T LM8	8 LM2T MM8

③ Steady light 9-15VAC/DC types are available on request. Contact Sales & Technical Support.

④ Not suitable for use with test element LM2T T100.

⑤ Sold in multi-packs of 10 pieces each.

Operational characteristics

Common to all types

- Ambient operating temperature: -10 to +140°F (-25 to +60°C)
- Ambient storage temperature: -40 to +160°F (-40 to +70°C)
- Any mounting position is allowed
- Degree of protection: IP 20
- Maximum tightening torque: 8.8in lb/1Nm.

For LED integrated lamp-holders only

- Over-voltage protection
- Inverse polarity protection
- Shock and vibration insensitivity
- Front and side visibility
- Power consumption at maximum admissible voltage: 1W maximum
- Electric life: 100,000 hours.

For test element only

- To periodically test light bulbs
- AC circuits are tested with half wave so bulb luminosity is low
- With DC circuits, L2 must be connected to positive (+) terminal of LM2T T100.

Certifications and compliance

UL listed for USA and Canada, File E 93601.

Compliant with standards: IEC/EN 60947-1, IEC/EN 60947-5-1.

Maximum wire cross section

1 or 2 12 AWG / 2.5 mm² conductors.

Wiring diagram for lamp-holder elements

Direct supply

LM2T EL400
LM2T DL400



Resistor-diode

LM2T ZL230
LM2T VL230



Transformer

LM2T YL
LM2T XL



Flashing

LM2T GL
LM2T FL

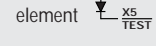


LED

LM2T L
LM2T M

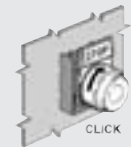


Test element

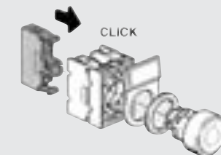
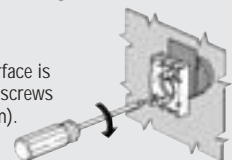


Assembly

Operators latch onto the mounting adapter with a simple rotation.



Fixing to the mounting surface is by means of incorporated screws (Tmax = 7.14in lb / 0.8 Nm).



① Filament bulb, BA9s U≤130V max 2.6W (not supplied); max dimensions 11x28 mm (0.4x1.1in). For higher voltages, use neon bulbs.

② Not suitable for 3-position selectors.

③ Filament bulb, BA9s (not supplied); max dimensions 11x28 mm (0.4x1.1in). Suitable for AC duty only.

Use bulbs with rated voltage equal to that of the power supply. E.g.: With LM2T FL230 use 120V bulbs if power supply is 120V and 230V bulbs if power supply 230V. 2.6W max bulb rating.

④ MultiLED bulbs must not be fitted.

⑤ In case of test circuits for lamp-holders having load in parallel, two LM2T T100 elements are required for each bulb. Refer to the wiring diagram attached to the product or contact Sales & Technical Support.

⑥ In case of neon bulbs, contact Sales & Technical Support.

⑦ Not suitable for use with LED integrated LM2T L and LM2T M types.

To locate additional product specifications and technical drawings go to www.asi-ez.com