

22mm Push buttons and pilot devices

Plastic series

Mushroom head button operators



8 LP2T B614...



8 LP2T B616...



8 LP2T B624...



8 LP2T B634...



8 LP2T B654...



8 LP2T B664

Color	Qty per pkg	Catalog number
-------	-------------	----------------

Momentary, Ø 40 mm (1.6in) (complete with mounting adapter).

Black	10	8 LP2T B6142
Green	10	8 LP2T B6143
Red	10	8 LP2T B6144
Yellow	10	8 LP2T B6145
Blue	10	8 LP2T B6146

Momentary, Ø 60 mm (2.4in) (complete with mounting adapter).

Black	10	8 LP2T B6162
Green	10	8 LP2T B6163
Red	10	8 LP2T B6164
Yellow	10	8 LP2T B6165
Blue	10	8 LP2T B6166

Maintained, pull to release, Ø 40 mm (1.6in) (complete with mounting adapter).

Black	10	8 LP2T B6242
Red	10	8 LP2T B6244

Maintained, twist to release, Ø 40 mm (1.6in) (complete with mounting adapter).

Black	10	8 LP2T B6342
Red	10	8 LP2T B6344

Maintained, twist key to release, Ø 40 mm (1.6in), keyed (complete with mounting adapter).

Black	10	8 LP2T B6542
	1	8 LP2T B6542G...ⓐ
Red	10	8 LP2T B6544
	1	8 LP2T B6544G...ⓐ

Maintained, twist to release, mechanical latching EN418 compliant Ø 40 mm (1.6in) (complete with mounting adapter).

Red	10	8 LP2T B6644
-----	----	--------------

ⓐ Versions with different key codes. Complete with the numeric code of the key. The following versions are available: 501, 502, 503, 504, 505, 506, 507, 508, 509, 510. Example of complete catalog number: 8 LM2T B6542G505.

Operational characteristics

- Ambient operating temperature: -10 to +140°F (-25 to +60°C)
- Ambient storage temperature: -40 to +160°F (-40 to +70°C)
- Any mounting position is allowed.
- Degree of protection: IP66 (IP65 only for LP2T B654 operators and LP2T R buttons).

Reference standards

Compliant with standards: IEC/EN 60947-1, IEC/EN 60947-5-1.

Materials

Polyamide and polycarbonate.

Mechanical endurance

Operating force: 1.76lb / 0.8 kg (operator).
Mechanical life for mushroom-head and reset buttons: 1,000,000 cycles.
Mechanical life for mushroom-head latch and reset buttons: 300,000 cycles.

Mounting adapter

Standard supply with the operator.

Operators latch onto the mounting adapter with a simple rotation.

The adapter is fixed to the mounting surface by means of incorporated screws (Tmax = 5.3in lb / 0.6 Nm).

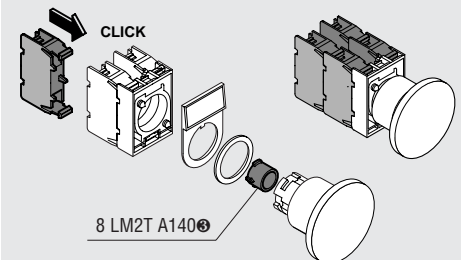
Auxiliary contacts for mushroom-head operators

See page 6-17.

Catalog numbers: 8 LM2T C10 (1NO)
8 LM2T CF10 (1NO Faston)
8 LM2T C10A (EM)
8 LM2T C01 (1NC)
8 LM2T CF01 (1NC Faston)
8 LM2T C01D (LB)

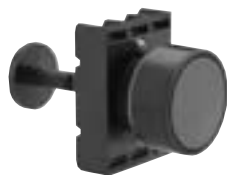
Auxiliary contacts snap onto the mounting adapter. Up to 4 auxiliary contacts can be fitted on the mounting adapter with the LP2T B624... and LP2T B6644 types. Up to 6 auxiliary contacts can be fitted on the mounting adapter with all the rest: 2 on the left, 2 at the center and 2 on the right.

To mount the auxiliary contacts in the center position on LP2T B614... and LP2T B616... types only, use the action plug LM2T A140 (see page 6-21).



ⓐ The action plug LM2T A140 for the center position is not standard supplied and must be purchased separately.

Mechanical reset buttons, complete unit, momentary



8 LP2T R1006
(complete with mounting adapter and rod)

Color	Qty per pkg	Catalog number
-------	-------------	----------------

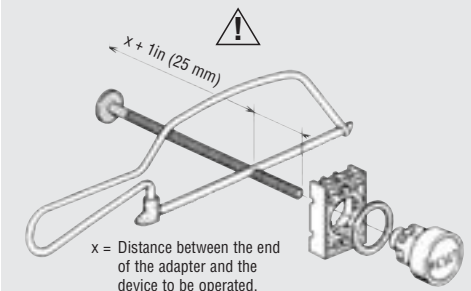
Flush (0.2in / 5.2 mm stroke). Adjustable length 0-5in (0-123 mm).

Black	10	8 LP2T R1002
Green	10	8 LP2T R1003
Red	10	8 LP2T R1004
Yellow	10	8 LP2T R1005
Blue	10	8 LP2T R1006
Blue (RESET)	10	8 LP2T R1196ⓐ

Extended (0.2in / 5.2 mm stroke). Adjustable length 0-5in (0-123 mm).

Red	10	8 LP2T R2004
-----	----	--------------

ⓐ With "RESET" inscription on the operator.



To locate additional product specifications and technical drawings go to www.asi-ez.com