

22mm Push buttons and pilot devices

Plastic series

Two button momentary operators with white pilot light



8 LP2T BL7113



8 LP2T BL72123

Direct wire pilot lights (with diffuser)



8 LP2T IL214



8 LP2T IL224



8 LP2T IL234

Color	Marked in white	Qty per pkg	Catalog number
Two flush push-buttons (complete with mounting adapter) ①.			
Black/Red	—	10	8 LP2T BL7112
Green/Red	—	10	8 LP2T BL7113
White/Black	—	10	8 LP2T BL7114
Black/Red	I-O	10	8 LP2T BL7122
Green/Red	I-O	10	8 LP2T BL7123
White/Black	I-O	10	8 LP2T BL7124
Green/Red	Start/Stop	10	8 LP2T BL7133
One extended and one flush button (c/w mounting adapter) ①.			
Black/Red	—	10	8 LP2T BL7212
Green/Red	—	10	8 LP2T BL7213
White/Black	—	10	8 LP2T BL7214
Black/Red	I-O	10	8 LP2T BL7222
Green/Red	I-O	10	8 LP2T BL7223
White/Black	I-O	10	8 LP2T BL7224
Green/Red	Start/Stop	10	8 LP2T BL7233

① Pilot light colour can be changed; see diffuser at the bottom of page 6-21.

Color	Bulb supplied	Qty per pkg	Catalog number
Screw terminals without protection.			
Green	no	10	8 LP2T IL213
Red	no	10	8 LP2T IL214
Yellow	no	10	8 LP2T IL215
Blue	no	10	8 LP2T IL216
Transparent	no	10	8 LP2T IL217
White	no	10	8 LP2T IL218
Screw terminals with protection.			
Green	no	10	8 LP2T IL223
Red	no	10	8 LP2T IL224
Yellow	no	10	8 LP2T IL225
Blue	no	10	8 LP2T IL226
Transparent	no	10	8 LP2T IL227
White	no	10	8 LP2T IL228
Faston terminals without protection ②.			
Green	no	10	8 LP2T IL233
Red	no	10	8 LP2T IL234
Yellow	no	10	8 LP2T IL235
Blue	no	10	8 LP2T IL236
Transparent	no	10	8 LP2T IL237
White	no	10	8 LP2T IL238

NOTE: No light bulb included, to be ordered separately. See page 6-20.

② LP2T IL23... pilot lights have Faston terminals, 1-6.35 or 2-2.8.

Operational characteristics

- Ambient operating temperature: -10 to +140°F (-25 to +60°C)
- Ambient storage temperature: -40 to +160°F (-40 to +70°C)
- Any mounting position is allowed
- Degree of protection: IP40 for double touch actuators IP65 for pilot lights.

Certifications and compliance

Pilot lights: UL listed for USA and Canada, file E 93601. Compliant with standards: IEC/EN 60947-1, IEC/EN 60947-5-1.

Materials

Polyamide and polycarbonate.

Mechanical endurance

Operating force: 1.76lb / 0.8kg (operator). Mechanical life for push-buttons: 1,000,000 cycles.

Mounting adapter

Standard supply with the operator. Operators latch onto the mounting adapter with a simple rotation.

The adapter is fixed to the mounting surface by means of incorporated screws (Tmax = 5.3in lb / 0.6 Nm).

Auxiliary contacts for button operators

See page 6-17.

Catalog numbers: 8 LM2T C10 (1NO)
8 LM2T CF10 (1NO Faston)
8 LM2T C10A (EM)
8 LM2T C01 (1NC)
8 LM2T CF01 (1NC Faston)
8 LM2T C01D (LB)

Auxiliary contacts snap onto the mounting adapter. Up to 4 auxiliary contacts can be fitted on the mounting adapter: 2 on the left and 2 on the right.

Lamp-holder elements for button operators

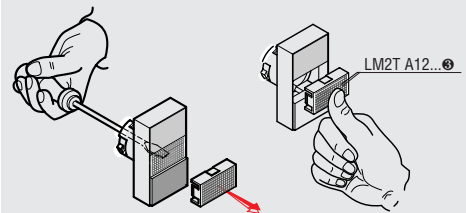
Use lamp-holder type LM2T EL400, LM2T ZL230, LM2T L or LM2T M for two button operators. See page 6-18.

Bulbs

Maximum recommended power for button operators: 1.2W. Maximum recommended power for monoblock pilot lights: 2.6W.

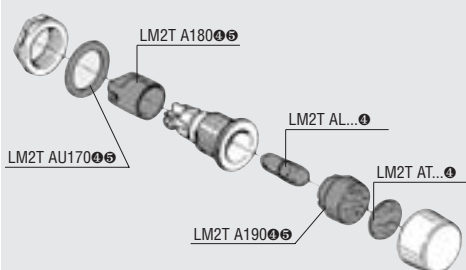
See page 6-20.

Diffuser for two button operators



③ The operator is standard supplied with a white diffuser. Colored diffusers LM2T A12 can be purchased separately. Refer to page 6-21.

Monoblock pilot lights



④ Can be purchased separately. Refer to pages 6-20 and 21.
⑤ Standard supplied with LP2T IL22... only.

To locate additional product specifications and technical drawings go to www.asi-ez.com