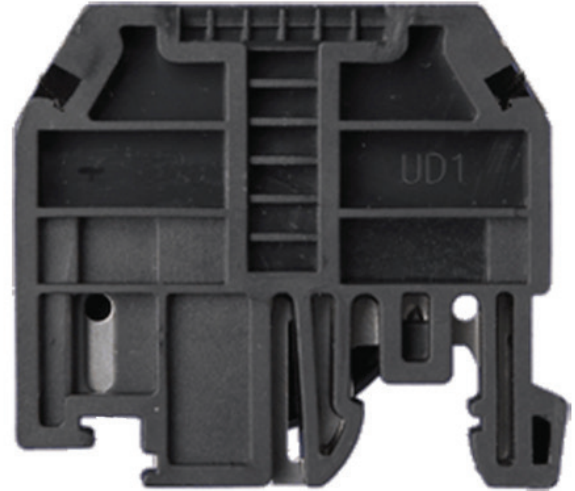


The ASIUD1B is a DIN rail mounted end clamp or stop that is used to hold other components on the DIN rail from moving or sliding. It features a stainless steel spring clip that eliminates screws and allows for quick, easy and firm mounting to the DIN rail.



Specifications

Dimensions:

HxDxW (mm) 47.5 x 9.5 x 38.2

Color Black

Accessories

Dimensions:

DIN Rail (2 meters)

7.5 x 35 mm Slotted PR005 1

7.5 x 35 mm Non-Slotted PR003 1

15 x 35 mm Slotted PR006 1

15 x 35 mm Non-Slotted PR007 1