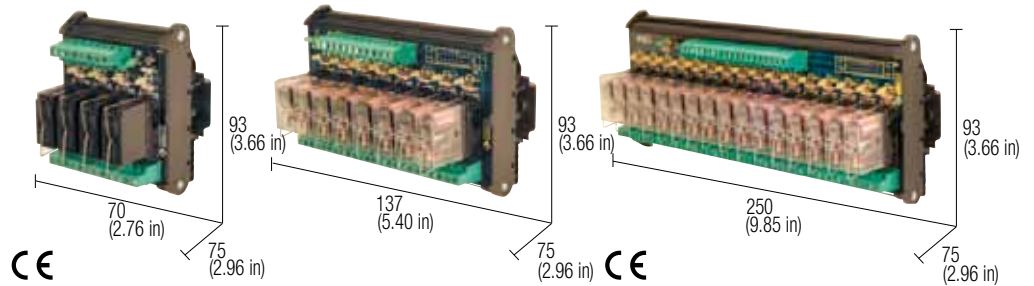


Multi-Channel Relay Modules

24 Vac/dc SPDT relay modules universal control voltage

- DC and AC control voltage
- Positive or negative control voltage
- Status LED display
- Pluggable relay



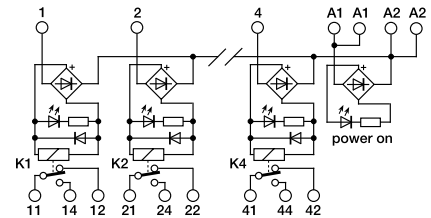
NOTES

The height dimension includes 35 mm DIN rail.
(1) Relay model is not binding, they may be modified without prior warning. The technical data shown here is to be considered typical
(2) Version available upon request.

POWER SUPPLY

A1 = +	A2 = -	negative common
A1 = -	A2 = +	positive common
A1 = ~	A2 = ~	AC power supply

BLOCK DIAGRAM



4 relay module

VERSIONS

- 4 relay module
- 8 relay module
- 16 relay module

Cat. No. XR041EAD	Cat. No. XR081EAD	Cat. No. XR161EAD
R41EAD	R81EAD	R161EAD

INPUT TECHNICAL DATA

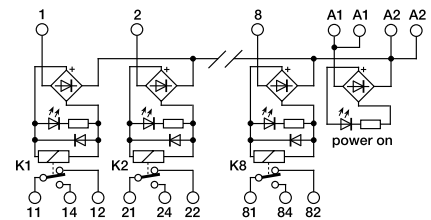
Rated voltage	24 Vac/dc \pm 10%
Rated current (1 channel)	22 mA \pm 10%
Turn ON time	15 ms
Turn OFF time	5 ms
Protection circuit	damping diode and bridge rectifier

OUTPUT TECHNICAL DATA

Type and number of contacts	SPDT AgSnO ₂
Nominal load (resistive)	12 A / 250 Vac
Current breaking power	12 A
Current of the fuse max.	—

GENERAL TECHNICAL DATA

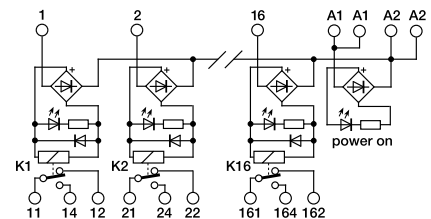
Operating temperature range	-10...+50°C
Coil/contact isolation	2.5 kVac / 60 s
Isolation between output terminals	1 kVac / 60 s (between open contact)
Protection degree	IP 00 IEC 529, EN60529
Overtoltage category / Pollution degree	III / 2
Reference Standard	IEC 664-1, DIN VDE 0110.1
Status display	green LED / yellow LED
Connection terminal	2.5 mm ² fixed screw type
Housing material	UL94V-0 plastic material
Approx. weight	192 g (6.76 oz) 345 g (12.18 oz) 688 g (24.29 oz)
Mounting information	vertical on rail adjacent without gap



8 relay module

MOUNTING ACCESSORIES

Mounting rail type according to IEC60715/TH35	PR/3/AC, PR/3/AC/ZB, PR/3/AS, PR/3/AS/ZB
Mounting rail type according to IEC60715/G32	PR/DIN/AC - PR/DIN/AS - PR/DIN/AL
Replacement relay (1)	Cat. No. 8904001
Screw type jumper	red white blue



16 relay module