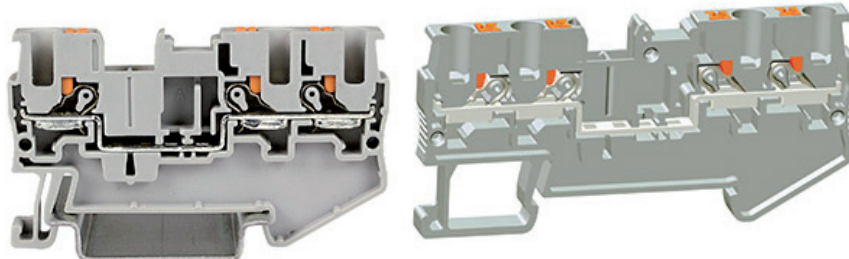


- Drop-in replacements to major manufacturers
- Models are 26 to 8 AWG, 20 to 40A, 600V
- Single level, double level, multi-wire, ground terminal blocks available
- Material of housing: UL94V0 polyamide
- Easy to install push-in jumpers
- Multiple labeling options



ORDERING INFO		
Order #	ASI421463	ASI421465
Type	ASIUJ6-2.5/1x2	ASIUJ6-2.5/2x2
Description	Three Wire Terminal Block	Four Wire Terminal Block
Package Size	50 pcs	50 pcs
SPECIFICATIONS		
Wire Range (AWG) UL/CSA	26-12	26-12
Voltage Rating (V) UL/CSA	600	600
Current Rating (A) UL/CSA	20	20
Dimensions (HxWxD) mm	35.2 x 5.2 x 60.4	35.2 x 5.2 x 72.2
Color	Gray	Gray
ACCESSORIES		
	Order #	Order #
End Cover	ASI422109	ASI422110
Push-In Jumpers		
2-pos	ASI423006	ASI423006
3-pos	ASI423007	ASI423007
4-pos	ASI423008	ASI423008
5-pos	ASI423009	ASI423009
10-pos	ASI423010	ASI423010
Labeling Strip	ASI014001	ASI14001
End Stop	ASIUD1B	ASIUD1B
DIN Rail 1-Meter		
7.5 x 35 mm Slotted	PR005-1M	PR005-1M
7.5 x 35 mm Non-Slotted	PR003-1M	PR003-1M
DIN Rail 2-Meter		
7.5 x 35 mm Slotted	PR005	PR005
7.5 x 35 mm Non-Slotted	PR003	PR003