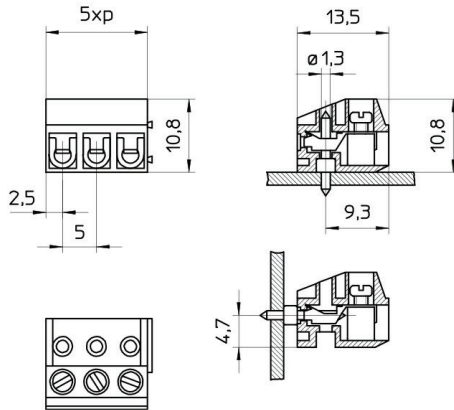





The low-cost CHF pluggable terminal block is a modular 2 and 3 position terminal block connector that can be joined together into any number of positions. The connector can be plugged into the header in two different positions, vertical and horizontal. The wire is protected during termination with the use of a wire protector between the screw and wire. The terminal block connector is rated at 6 Amps, 300 Volts with a wire range of 30 to 16 AWG. The CHF connector plugs directly into the CHM printed circuit board header.






Pitch	mm
Rated Voltage	V
Rated Current	A

5
250
10

Types of cables	
Nominal cross section	mm <sup>2</sup> AWG
Stripping length	mm
Torque	Nm / Lb-in
Temperature	°C
Housing	
Captive Screw	
	mm

		
0.5 ÷ 1.5 30 ÷ 16	0.5 ÷ 1.5 30 ÷ 16	0.5 ÷ 1.5 30 ÷ 16
6		
0.4	/	3
110		
PA - UL 94 V0		
M2.5		
	0.6 x 3.5	

	IMQ	EN61984
	VDE	EN61984
	cUL	UL1059 + C22.2 n°158

V	A	mm <sup>2</sup> /AWG
300	6	30 ÷ 16

Poles	X
Colors	Y

min 2 - max ...		
<b>NE</b>		

How to order					
<b>CHF</b>	<b>5</b>	<b>/</b>	<b>X</b>	<b>...</b>	<b>Y N...</b>
Type	Pitch	Poles	Version	Colors	Printing