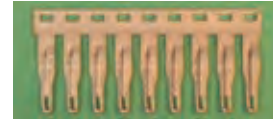


Accessories for CK series

Jumper PTC/CK/42



(1)

Notes :

(1) Example of a pre-cut 9 position jumper.

(2) CK/PT end section must be mounted on last module to assure IP20 protection degree.

(3) 32 A is the maximum current; however this value is limited by the rated current of the spring-clamp terminal blocks down to 24 A; For instance, having a jumper of 11 poles (1 for common and 10 for distribution) a current of 2.4 A can be distributed on every poles.

VERSIONS	
PTC/CK/42	cod. PTCK42
GENERAL TECHNICAL DATA	
Protection degree	IP20 IEC529 EN60529 (2)
Number of poles	42
Pitch	6 mm (0,24 in)
Rated current carrying capacity of jumper	32 A (3)
Insulation color	—
Material	tin copper alloy
Approximative weight	27 g (0,95 oz) (42 poli)

Accessories for CWRE series

CWBK jumper



Notes :

Suitable for use with CWRE

VERSIONS		
CWBK 7-0802 (1) cod. X766802	CWBK 7-0803 (1) cod. X766803	CWBK 7-0804 (1) cod. X766804
GENERAL TECHNICAL DATA		
Protection degree	IP20 IEC529 EN60529	IP20 IEC529 EN60529
Number of poles	16	16
Pitch	6.2 mm	6.2 mm
Rated current carrying capacity of jumper	16 A	16 A
Insulation color	red	white
Material	—	—
Approximative weight	4 g (0,14 oz)	4 g (0,14 oz)

Marking system

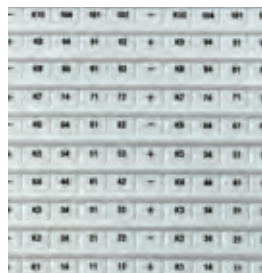
CNU/8 series

Notes :

These are the tags suited to be used for the marking of the terminals on CK series, supplied in tables of 100 elements. They are manufactured in white polyamide and are provided with black printing; to be applied directly into position either before or after assembling the relays to the din rail. They have a 6 mm standard pitch and are 8 mm high. In the table below the types suited to be used with CK interface modules are listed; they are available in numbers or symbols marking patterns. For the complete range, please refer to the terminal blocks catalogue on the accessories section.



N8CK1610



N8CK1620



N8CK2518



N8CKD020

Marking	Type of card (100 elements)	Code
Tags suited for CKR16 for the marking of 2 modules from 1 to 10 channels	CNU/8/CK16/10	N8CK1610
Tags suited for CKR16 for the marking of 2 modules from 11 to 20 channels	CNU/8/CK16/20	N8CK1620
Tags suited for CKR25 & CKS21U for the marking of 2 modules from 1 to 18 channels	CNU/8/CK25/18	N8CK2518
Tags suited for CKS15 for the marking of 2 modules from 1 to 10 channels	CNU/8/CK15/10	N8CK1510
Tags suited for CKS15 for the marking of 2 modules from 11 to 20 channels	CNU/8/CK15/20	N8CK1520
Tags suited for CKD for the marking of 2 modules from 1 to 20 diodes	CNU/8/CKD	N8CKD020
N°. 100 tags with "+" symbol	CNU/8/O23	N8O23
N°. 100 tags with "-" symbol	CNU/8/O24	N8O24
N°. 100 tags with "~" symbol	CNU/8/O26	N8O26
N°. 100 blank tags	CNU/8/O30	NU008