

CZM CZM..SQ*

Interlocking modules - Modulo componibile
Elements modulaires - Zusammensteckbare Blöcke

Poles - Poli - Pôles - Polzahl 2/3

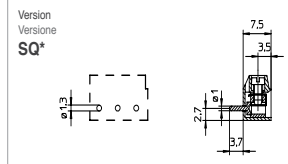
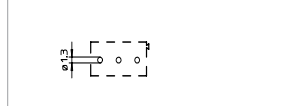
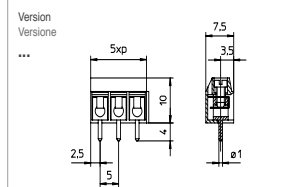


Pitch / Pas	5
Rated Voltage / Tensione nominale	200
Rated Current / Corrente nominale	13,5

Types of cables / Tipo cavi	0,5 ÷ 1,5 / 30 ÷ 14	0,5 ÷ 1 / 30 ÷ 14	0,5 ÷ 1 / 30 ÷ 14
Nominal cross section / Sezione nominale	mm AWG	mm AWG	mm AWG
Stripping length / Lunghezza spelatura	6	6	6
Torque / Coppia di torsione	0,4	/	3
Temperature / Temperatura	85	85	85
Housing / Corps isolant	PC - UL 94 V0		
Screw / Vite	M2,5		
mm	0,6 x 3,5		

V	A	mm / AWG
250	13,5	0,5 ÷ 1
250	13,5	0,5 ÷ 1
300	14	26 ÷ 14

min 2 - max...		
GR	/ on demand	NE
D/A2		



CZM CZM..SQ*

Interlocking modules - Modulo componibile
Elements modulaires - Zusammensteckbare Blöcke

Poles - Poli - Pôles - Polzahl 1/2

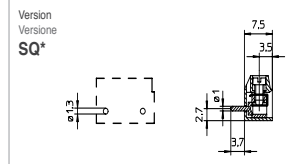
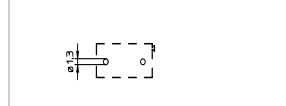
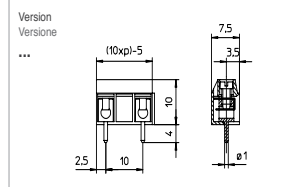


Pitch / Pas	10
Rated Voltage / Tensione nominale	500
Rated Current / Corrente nominale	13,5

Types of cables / Tipo cavi	0,5 ÷ 1,5 / 30 ÷ 14	0,5 ÷ 1 / 30 ÷ 14	0,5 ÷ 1 / 30 ÷ 14
Nominal cross section / Sezione nominale	mm AWG	mm AWG	mm AWG
Stripping length / Lunghezza spelatura	6	6	6
Torque / Coppia di torsione	0,4	/	3
Temperature / Temperatura	85	85	85
Housing / Corps isolant	PC - UL 94 V0		
Screw / Vite	M2,5		
mm	0,6 x 3,5		

V	A	mm / AWG
750	13,5	0,5 ÷ 1
750	13,5	0,5 ÷ 1
300	14	26 ÷ 14

min 2 - max...		
GR	/ on demand	NE
D/A2		



CZI CZI..SQ*

Single block - Blocco unico
Monobloc - Einzelblock

Poles - Poli - Pôles - Polzahl 2/24

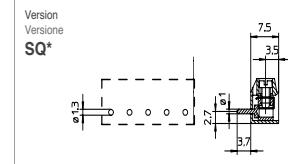
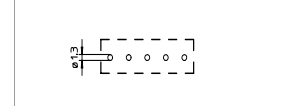
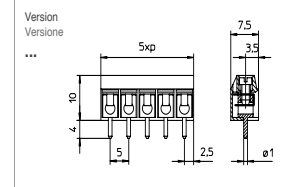


Pitch / Pas	5
Rated Voltage / Tensione nominale	200
Rated Current / Corrente nominale	13,5

Types of cables / Tipo cavi	0,5 ÷ 1,5 / 30 ÷ 14	0,5 ÷ 1 / 30 ÷ 14	0,5 ÷ 1 / 30 ÷ 14
Nominal cross section / Sezione nominale	mm AWG	mm AWG	mm AWG
Stripping length / Lunghezza spelatura	6	6	6
Torque / Coppia di torsione	0,4	/	3
Temperature / Temperatura	85	85	85
Housing / Corps isolant	PC - UL 94 V0		
Screw / Vite	M2,5		
mm	0,6 x 3,5		

V	A	mm / AWG
250	13,5	0,5 ÷ 1
250	13,5	0,5 ÷ 1
300	14	26 ÷ 14

min 2 - max 24		
GR	/ on demand	NE
D/A2		



CZI CZI..SQ*

Single block - Blocco unico
Monobloc - Einzelblock

Poles - Poli - Pôles - Polzahl 1/212

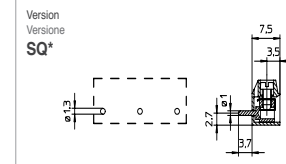
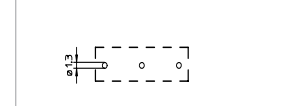
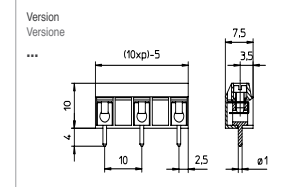


Pitch / Pas	10
Rated Voltage / Tensione nominale	500
Rated Current / Corrente nominale	13,5

Types of cables / Tipo cavi	0,5 ÷ 1,5 / 30 ÷ 14	0,5 ÷ 1 / 30 ÷ 14	0,5 ÷ 1 / 30 ÷ 14
Nominal cross section / Sezione nominale	mm AWG	mm AWG	mm AWG
Stripping length / Lunghezza spelatura	6	6	6
Torque / Coppia di torsione	0,4	/	3
Temperature / Temperatura	85	85	85
Housing / Corps isolant	PC - UL 94 V0		
Screw / Vite	M2,5		
mm	0,6 x 3,5		

V	A	mm / AWG
750	13,5	0,5 ÷ 1
750	13,5	0,5 ÷ 1
300	14	26 ÷ 14

min 2 - max 12		
GR	/ on demand	NE
D/A2		



Pitch / Pas	Passo / Rastermaß	mm
Rated Voltage / Tensione nominale	Tensione nominale / Bemessungsspannung	V
Rated Current / Corrente nominale	Corrente nominale / Bemessungsstrom	A

Types of cables / Tipo cavi	Leitungstypen	
Nominal cross section / Sezione nominale	Nennquerschnitt	mm AWG
Stripping length / Lunghezza spelatura	Abisolierlänge	mm
Torque / Coppia di torsione	Drehmoment	Nm / Lb-in
Temperature / Temperatura	Temperatur	°C
Housing / Corps isolant	Corpo isolante / Isolierkörper	
Screw / Vite	Schraube	
mm		

IMQ	EN60998
VDE	EN60998
cUL	UL1059 + C22.2 n°158

Poles / Pôles	Poli / Polzahl	X
Colours / Couleurs	Colori / Farben	Y
Other information / Autres données	Altri dati / Weitere Informationen	p.

How to order / Ordine					
Reference de commande / Bestellschlüssel					
CZM	5	/	X	...	Y N...
Type	Pitch	Poles	Version	Colours	Printing
Tipo	Passo	Poli	Versione	Colori	Numerazione
Type	Pas	Pôles	Version	Couleurs	Marquage
Typ	Rastermaß	Polzahl	Version	Farben	Bedruckung

* SQ Version = Horizontal version