

H Series

with polyamide insulating body

- UL94V-0
- mounting onto PR/3 type rails according to IEC 60715 Std., "TH/35" type
- double possibility of PTC – "Easy Bridge" multi-pole cross connection, on each level
- available in standard (grey RAL 7042 colour) or (Ex)i "intrinsic safety" circuits (blue RAL 5015 colour) versions, where indicated

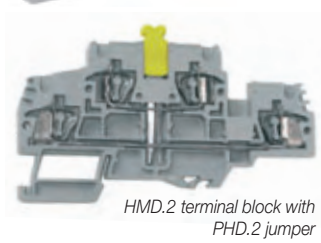
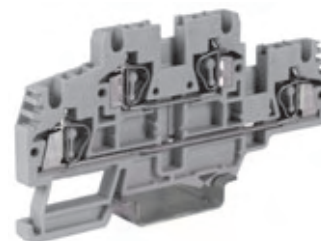


detail of PTC jumper and DFM barrier with numbering

detail of composable test plug



The /GR tag indicates the grey colour version.



HMD.2 terminal block with PHD.2 jumper

Please refer to the table on page 136 in order to determine the insulation voltage of the different PTC connection diagrams

grey version	
(Ex)i version	
version with permanent internal connection	
TECHNICAL CHARACTERISTICS	
function / type	
rated cross-section	(mm ²)
connecting capacity	
flexible	(mm ²)
rigid	(mm ²)
max. flexible with ferrule (mm ²)-ferrule type	
rated voltage / rated current / gauge	conf. to IEC 60947-7-1
rated voltage / rated current / AWG	UL
rated impulse withstand voltage / pollution degree	
insulation stripping length	(mm)
height / width / thickness	TH/35 7,5 mm
height / width / thickness	TH/35 15 mm
height / width / thickness	G32

HMD.1/GR	Cat. No. HD200GR
HMD.1 (Ex)i	Cat. No. HD300
HMD.1/CI/GR	Cat. No. HD120GR
two-level feed-through	
rated cross-section	1,5
connecting capacity	
flexible	0,2 ÷ 2,5
rigid	0,2 ÷ 2,5
max. flexible with ferrule (mm ²)-ferrule type	1,5 - WP15/14
rated voltage / rated current / gauge	500 V / 17,5 A / B2
rated voltage / rated current / AWG	600 V / 15 A / 26-14 AWG
rated impulse withstand voltage / pollution degree	6 KV / 3
insulation stripping length	10
height / width / thickness	59 / 73 / 4,2
height / width / thickness	67 / 73 / 4,2
height / width / thickness	-

HMD.2N/GR	Cat. No. HD400GR
HMD.2N (Ex)i	Cat. No. HD410
HMD.2N/CI/GR	Cat. No. HD450GR
two-level feed-through	
rated cross-section	2,5
connecting capacity	
flexible	0,2 ÷ 2,5
rigid	0,2 ÷ 2,5
max. flexible with ferrule (mm ²)-ferrule type	1,5 - WP15/14
rated voltage / rated current / gauge	630 V / 24 A / B2
rated voltage / rated current / AWG	600 V / 15 A / 26-14 AWG
rated impulse withstand voltage / pollution degree	8 KV / 3
insulation stripping length	10
height / width / thickness	59 / 73 / 5,2
height / width / thickness	67 / 73 / 5,2
height / width / thickness	-

HMD.2/GR	Cat. No. HD100GR
two-level feed-through	
rated cross-section	2,5
connecting capacity	
flexible	0,2 ÷ 4
rigid	0,2 ÷ 4
max. flexible with ferrule (mm ²)-ferrule type	1,5 - WP15/14
rated voltage / rated current / gauge	800 V / 24 A / A3
rated voltage / rated current / AWG	600 V / 20 A / 24-12 AWG
rated impulse withstand voltage / pollution degree	8 KV / 3
insulation stripping length	10
height / width / thickness	49 / 91 / 5,2
height / width / thickness	56 / 91 / 5,2
height / width / thickness	-

APPROVALS



Approvals referred to HMD.1 standard version



Approvals referred to HMD.2N standard version



ACCESSORIES	
End sections	grey blue
Permanent cross connection (intrinsically IPXXB protected once mounted)	
Rated current carrying capacity of jumper	(A)
Cross-connection identification strip (100 mm)	green
Internal cross connection (removable)	
Shunting screw and sleeve	
Coloured partition	red, green, white
Cross connection barrier	red
Test plug socket	
Test plug	
Modular test plug	
End section for modular test plug	
Numbering strip	
Screwdriver for the activation of the spring	
Warning plate	on adjacent terminal blocks
Marking tag	printed or blank
End bracket	
Mounting rail according to IEC 60715 Std.	

Type	Cat. No.
HMD.1/PT/GR	HD201GR
HMD.1/PT (Ex)i	HI301
PTC/1/02 poles	PTC0102
PTC/1/03 poles	PTC0103
PTC/1/05 poles	PTC0105
PTC/1/10 poles	PTC0110
PTC/1/00 (50 poles)	PTC0100
17,5	
PTC/SP	PTC0990
-	
DFU/07	DU07..
DFM/500	DF500
-	
SDH/4-SDH/4P	DH004-DH04P
SH4/PT	DH401
SHZ/1	SH004
CCH/2,5-4	CCH02
-	
-	
BTU for PR/DIN and PR/3	BT005
BTO	BT007
BT/3 for PR/3 only	BT003
-	
PR/3/AC of steel	PRO03
PR/3/AS same with slots	PRO05

Type	Cat. No.
HMD.1/PT/GR	HD201GR
HMD.1/PT (Ex)i	HI301
PTC/03/02 poles	PTC0302
PTC/03/03 poles	PTC0303
PTC/03/05 poles	PTC0305
PTC/03/10 poles	PTC0310
PTC/03/00 (50 poles)	PTC0300
24	
PTC/SP	PTC0990
-	
DFU/07	DU07..
DFM/500	DF500
-	
SDH/7	DH007
SH7/PT	DH701
SHZ/2	SH001
CCH/2,5-4	CCH02
-	
CNU/8	NU...
BTU for PR/DIN and PR/3	BT005
BTO	BT007
BT/3 for PR/3 only	BT003
-	
PR/3/AC of steel	PRO03
PR/3/AS same with slots	PRO05

Type	Cat. No.
HMD/PT/GR	HD101GR
-	
PH/2,5-4	PH100
PHD/2	PHD02
-	
24	
-	
PHD/2	PHD02
-	
DFH/4	DH04..
-	
-	
SDD/1	DD001
-	
-	
SHZ/2	SH001
CCH/2,5-4	CCH02
-	
CNU/8	NU...
(solo su piano inferiore)	
BTU for PR/DIN and PR/3	BT005
BTO	BT007
BT/3 for PR/3 only	BT003
-	
PR/3/AC of steel	PRO03
PR/3/AS same with slots	PRO05

To locate additional product specifications and technical drawings go to www.asi-ez.com