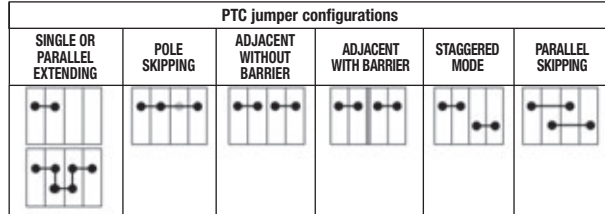
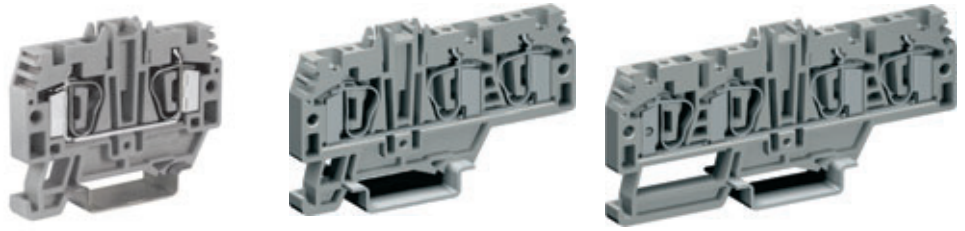


HMM Series

with polyamide insulating body

- UL94V-0
- mounting onto PR/3 type rails according to IEC 60715 Std., "TH/35" type
- available in standard (grey RAL 7042 colour) or (Ex)i "intrinsic safety" circuits (blue RAL 5015 colour) versions



Terminal block	Jumper	Insulation voltage in the above configurations (V)					
HMM.4	PTC/5	500	500	500	500	500	

The /GR tag indicates the grey colour version.

grey version	
(Ex)i version	
TECHNICAL CHARACTERISTICS	
function / type	feed-through
rated cross-section (mm ²)	4
connecting capacity	
flexible (mm ²)	0,2 ÷ 6
rigid (mm ²)	0,2 ÷ 6
max. flexible with ferrule (mm ²)-ferrule type	4 - WP40/16
rated voltage / rated current / gauge conf. to IEC 60947-7-1	800 V / 32 A / A4
rated voltage / rated current / AWG	600 V / 30 A / 24-10 AWG
rated impulse withstand voltage / pollution degree	8 kV / 3
insulation stripping length (mm)	17
height / width / thickness	45 / 58 / 6,2
height / width / thickness	52 / 58 / 6,2
height / width / thickness	-

HMM.4/GR	Cat. No. HM250GR
HMM.4 (Ex)i	Cat. No. HI250
function / type	feed-through
rated cross-section (mm ²)	4
connecting capacity	
flexible (mm ²)	0,2 ÷ 6
rigid (mm ²)	0,2 ÷ 6
max. flexible with ferrule (mm ²)-ferrule type	4 - WP40/16
rated voltage / rated current / gauge conf. to IEC 60947-7-1	800 V / 32 A / A4
rated voltage / rated current / AWG	600 V / 30 A / 24-10 AWG
rated impulse withstand voltage / pollution degree	8 kV / 3
insulation stripping length (mm)	17
height / width / thickness	45 / 58 / 6,2
height / width / thickness	52 / 58 / 6,2
height / width / thickness	-

HMM.4/1+2/GR	Cat. No. HM210GR
HMM.4/1+2 (Ex)i	Cat. No. HI210
function / type	feed-through 1 input and 2 outputs
rated cross-section (mm ²)	4
connecting capacity	
flexible (mm ²)	0,2 ÷ 6
rigid (mm ²)	0,2 ÷ 6
max. flexible with ferrule (mm ²)-ferrule type	4 - WP40/16
rated voltage / rated current / gauge conf. to IEC 60947-7-1	800 V / 32 A / A4
rated voltage / rated current / AWG	-
rated impulse withstand voltage / pollution degree	8 kV / 3
insulation stripping length (mm)	17
height / width / thickness	45 / 78 / 6,2
height / width / thickness	52 / 78 / 6,2
height / width / thickness	-

HMM.4/2+2/GR	Cat. No. HM220GR
HMM.4/2+2 (Ex)i	Cat. No. HI220
function / type	feed-through 2 inputs and 2 outputs
rated cross-section (mm ²)	4
connecting capacity	
flexible (mm ²)	0,2 ÷ 6
rigid (mm ²)	0,2 ÷ 6
max. flexible with ferrule (mm ²)-ferrule type	4 - WP40/16
rated voltage / rated current / gauge conf. to IEC 60947-7-1	800 V / 32 A / A4
rated voltage / rated current / AWG	-
rated impulse withstand voltage / pollution degree	8 kV / 3
insulation stripping length (mm)	17
height / width / thickness	45 / 98 / 6,2
height / width / thickness	52 / 98 / 6,2
height / width / thickness	-

APPROVALS



ACCESSORIES	
End sections	grey blue
Permanent cross connection (intrinsically IPXXB protected once mounted)	
Rated current carrying capacity of jumper (A)	
Cross-connection identification strip (100 mm)	green
Multiple common bar	250 mm
Shunting screw and sleeve	
Coloured partition	red, green, white
Cross connection barrier	red
Test plug socket	
Test plug	
Modular test plug	
End section for modular test plug	
Numbering strip	
Screwdriver for the activation of the spring	
Warning plate	on adjacent terminal blocks
Marking tag	printed or blank
End bracket	
Mounting rail according to IEC 60715 Std.	

Type	Cat. No.
HMT.4/PT/GR	HM251GR
HMT.4/PT (Ex)i	HI251
PTC/5/02 poles	PTC0502
PTC/5/03 poles	PTC0503
PTC/5/05 poles	PTC0505
PTC/5/10 poles	PTC0510
PTC/5/00 (40 poles)	PTC0500
32	
PTC/SP	PTC0990
-	
DFH/1	DH01..
-	
SDD/1	DD001
SDH/6	DH006
SH6/PT	DH601
SHZ/4	SH002
CCH/2,5-4	CCH02
-	
CNU/8	NU...
BTU for PR/DIN and PR/3	BT005
BTO	BT007
BT/3 for PR/3 only	BT003
-	
PR/3/AC of steel	PR003
PR/3/AS same with slots	PR005

Type	Cat. No.
HMT.4/1+2/PT/GR	HM211GR
HMT.4/1+2/(Ex)i	HI211
PTC/5/02 poles	PTC0502
PTC/5/03 poles	PTC0503
PTC/5/05 poles	PTC0505
PTC/5/10 poles	PTC0510
PTC/5/00 (40 poles)	PTC0500
32	
PTC/SP	PTC0990
-	
DFH/4	DH04..
-	
SDD/1	DD001
SDH/6	DH006
SH6/PT	DH601
SHZ/4	SH002
CCH/2,5-4	CCH02
-	
CNU/8	NU...
BTU for PR/DIN and PR/3	BT005
BTO	BT007
BT/3 for PR/3 only	BT003
-	
PR/3/AC of steel	PR003
PR/3/AS same with slots	PR005

Type	Cat. No.
HMT.4/2+2/PT/GR	HM221GR
HMT.4/2+2/(Ex)i	HI221
PTC/5/02 poles	PTC0502
PTC/5/03 poles	PTC0503
PTC/5/05 poles	PTC0505
PTC/5/10 poles	PTC0510
PTC/5/00 (40 poles)	PTC0500
32	
PTC/SP	PTC0990
-	
DFH/4	DH04..
-	
SDD/1	DD001
SDH/6	DH006
SH6/PT	DH601
SHZ/4	SH002
CCH/2,5-4	CCH02
-	
CNU/8	NU...
BTU for PR/DIN and PR/3	BT005
BTO	BT007
BT/3 for PR/3 only	BT003
-	
PR/3/AC of steel	PR003
PR/3/AS same with slots	PR005