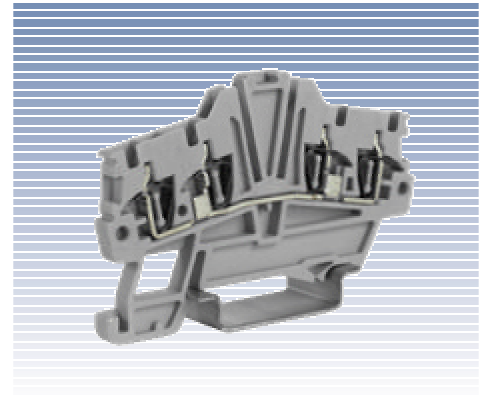


Spring Clamp IEC Feed Through Terminal Blocks

HMM Series

The HMM series of terminal blocks have been designed to meet the need for fast, reliable, screwless wire terminations. With a wire range from 24 AWG to 8 AWG and options that include a double level, one, three or four wire terminations, the HMM spring clamp terminal blocks can address most control system applications. The circuit disconnect and fuse terminal block styles make the spring clamp HMM series a complete family of DIN rail mounted terminal blocks.

The entire family is manufactured with a UL94 V0 polyamide 6.6 material. The stainless steel clamps and tin-plated terminals provide excellent conductivity, resistance to corrosion and superior wire retention, even under vibration.



Terminal width .21" (5.2mm) Wire strip length .51" (13mm)

SPECIFICATIONS		WIRE RANGE	CURRENT (A)	VOLTAGE (V)
Connection Data UL 1059 No. 22-2, No. 158 IEC 947-7-1		26 - 14 AWG		
		26 - 14 AWG	15	600
		—		
		0.2 - 2.5mm	15	800
ORDERING INFORMATION		TYPE	CATALOG No.	Pcs/Pkg
Terminal block,				
	standard	HMM. 1/2+2/GR	HM420GR	80
	(Ex)i version	HMM. 1/2+2(Ex)i	HI420	80
	Grey			
	Blue			
ACCESSORIES		TYPE	CATALOG No.	Pcs/Pkg
End cover, width .06" (1.5mm)				
		HMT.1/2+2/PT/GR	HM421GR	25
		HMT.1/2+2/PT(Ex)i	HI421	5
	Grey			
	Blue			
Insertion bridges, 2 position		PTC/1/02	PTC0102	25
	3 position	PTC/1/03	PTC0103	25
	5 position	PTC/1/05	PTC0105	25
	10 position	PTC/1/10	PTC0110	10
Partition plate,		DFH/3/B	DH03B	25
	White	DFH/3/R	DH03R	25
	Red	DFH/3/V	DH03V	25
	Green			
Test plug, for circuit testing		SDH/4	DH004	50
Marking system,				
	blank marker	SHZ/1	SH004	60
	printed marker	SHZ/2/...	SH1..	60
	custom printed marker	CM	CM...	
End stop, width .31" (8mm)				
	universal			
	35mm rail only			
Mounting rail, DIN (2 meter length)				
	non-slotted symmetrical 35mm x 7.5mm	PR/3/AC	PR003	1
	slotted symmetrical 35mm x 7.5mm	PR/3/AS	PR005	1
	non-slotted symmetrical 35mm x 15mm	PR/3/PP	PR007	1
	slotted symmetrical 35mm x 15mm	PR/3/PA	PR006	1