

Pushbutton actuators, spring return



LPC B10...



LPC B20...



7-4



LPC B30...



Pushbutton actuators, spring return, with symbol



LPC B11...



LPC B21...



Order code	Colour	Qty per pkg	Wt
		n°	[kg]
Flush (without mounting adapter). Spring return.			
LPC B102	Black	10	0.025
LPC B103	Green	10	0.025
LPC B104	Red	10	0.025
LPC B105	Yellow	10	0.025
LPC B106	Blue	10	0.025
LPC B108	White	10	0.025
Extended (without mounting adapter). Spring return.			
LPC B202	Black	10	0.027
LPC B203	Green	10	0.027
LPC B204	Red	10	0.027
LPC B205	Yellow	1	0.027
LPC B206	Blue	1	0.027
LPC B208	White	1	0.027
Shrouded (without mounting adapter). Spring return.			
LPC B302	Black	10	0.027
LPC B303	Green	10	0.027
LPC B304	Red	10	0.027
LPC B305	Yellow	1	0.027
LPC B306	Blue	1	0.027
LPC B308	White	1	0.027

Order code	Symbol	Colour	Qty per pkg	Wt
			n°	[kg]
Flush (without mounting adapter). Spring return.				
LPC B1102	O	Black	10	0.025
LPC B1104		Red	10	0.025
LPC B1113	I	Green	10	0.025
LPC B1118		White	10	0.025
LPC B1123	II	Green	1	0.025
LPC B1128		White	1	0.025
LPC B1132	STOP	Black	1	0.025
LPC B1134		Red	10	0.025
LPC B1142	← ①	Black	10	0.025
LPC B1148		White	10	0.025
LPC B1152	↑ ②	Black	10	0.025
LPC B1158		White	10	0.025
LPC B1163	START	Green	10	0.025
LPC B1168		White	1	0.025
LPC B1176	R	Blue	1	0.025
LPC B1178		White	1	0.025
LPC B1196	RESET	Blue	10	0.025
LPC B1502	↔	Black	10	0.025
LPC B1512	↔	Black	10	0.025
Extended (without mounting adapter). Spring return.				
LPC B2102	O	Black	10	0.027
LPC B2104		Red	10	0.027
LPC B2132	STOP	Black	1	0.027
LPC B2134		Red	10	0.027

① Arrow symbol can be used to indicate right or left.
 ② Arrow symbol can be used to indicate up or down.

Operational characteristics

- Ambient conditions:
 - Operating temperature: -25...+70°C
 - Storage temperature: -40...+85°C
- Any mounting position is allowed.
- Degree of protection:
 - Per IEC/EN: IP66, IP67 and IP69K
 - Per UL: type 1, 2, 3R, 4, 4X, 12, 12K.

Materials

Polyamide.

Mechanical endurance

Operating force: <0.5kg / 1.1lb (actuator).
 Mechanical life: 5,000,000 cycles.

Mounting adapter

See page 7-12.
 Type: LPX AU120.
 Actuators are installed through a Ø22mm/Ø0.89in drilling with a threaded fixing ring (Tmax = 2.3Nm / 1.69lbf).
 The mounting adapter directly snaps onto the actuator.

Contact elements

See page 7-12.
 Type: LPX C10 (1NO)
 LPX CF10 (1NO Faston)
 LPX C10A (1EM)
 LPX C01 (1NC)
 LPX CF01 (1NC Faston)
 LPX C01D (1LB)

Contact elements snap onto the mounting adapter.
 Up to 9 contact elements can be fitted on the mounting adapter: 3 on the left, 3 at the centre and 3 on the right; one on top of the other.
 To mount contact elements in the centre position, use the accessory: LPX A140; see page 7-17.

Certifications and compliance

Certifications obtained: UL Listed, for USA and Canada, (File E93601), as Auxiliary Devices.
 Certifications pending at time of catalogue printing: CCC.
 Compliant with standards: IEC/EN 60947-1, IEC/EN 60947-5-1, UL508, CSA C22.2 n° 14.

Mounting adapter



LPX AU120



Order code	Description	Qty per pkg	Wt
		n°	[kg]
LPX AU120	Mounting adapter	10	0.019

Contact elements

7-12



LPX C...



Order code	Function	Qty per pkg	Wt
	All SPST	n°	[kg]

Screw termination.
 Without mounting adapter.

LPX C10Ⓢ	$\begin{matrix} 1.3 \\ \\ 1.4 \end{matrix}$ NOⓈ	10	0.011
LPX C10A	$\begin{matrix} 1.7 \\ \\ 1.8 \end{matrix}$ EMⓈ	10	0.011
LPX C01⊖	$\begin{matrix} 1.1 \\ \\ 1.2 \end{matrix}$ NCⓈ	10	0.011
LPX C01DⓈ⊖	$\begin{matrix} 1.5 \\ \\ 1.6 \end{matrix}$ LBⓈⓈ	10	0.011



LPX E...



Screw termination.
 With mounting adapter.

LPX E10Ⓢ	$\begin{matrix} 1.3 \\ \\ 1.4 \end{matrix}$ NOⓈ	10	0.029
LPX E01⊖	$\begin{matrix} 1.1 \\ \\ 1.2 \end{matrix}$ NCⓈ	10	0.029



LPX CF01 LPX CF10



Faston termination.
 Without mounting adapter.

LPX CF10Ⓢ	$\begin{matrix} 1.3 \\ \\ 1.4 \end{matrix}$ NOⓈ	10	0.012
LPX CF01⊖	$\begin{matrix} 1.1 \\ \\ 1.2 \end{matrix}$ NCⓈ	10	0.012

- Ⓢ Not suitable for push-push actuators. Use LPX C10A (EM) or LPX C01 (NC) type only with push-push actuators.
- Ⓢ Normally open contact with early make operation.
- Ⓢ Direct opening operation ⊖ in accordance with IEC/EN 60947-5-1.
- Ⓢ Normally closed contact with late break operation.

Operational characteristics

- Ambient conditions:
 - Operating temperature: -25...+70°C
 - Storage temperature: -40...+85°C
- Any mounting position is allowed.
- Degree of protection per IEC/EN:
 - IP20 for contacts elements with screw termination
 - IP00 for contact elements with Faston termination.
- Tightening torque: 1Nm/0.74lbf max (except Faston).

General characteristics of contact elements

Self cleaning, dual scraping-oscillating action
 IEC rated insulation voltage: 690V
 IEC rated thermal current Ith: 10A
 Conductivity: 5V 1mA
 UL/CSA and IEC/EN 60947-5-1 designation: A600 Q600.
 IEC operational power in AC15:

[V]	12	24	48	120	240	400	480	500	600
[A]	6	6	6	6	3	1.9	1.5	1.4	1.2

IEC operational power in DC13:

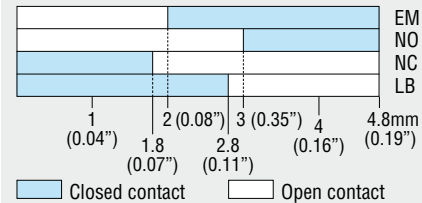
[V]	12	24	48	125	250	440	500	600
[A]	3	3	1.5	0.55	0.27	0.15	0.13	0.1

Short-circuit protection fuse: max calibre 10A gG/SC.

Contact resistance: ≤20mΩ.

Terminals: Clamp screw with washer
 Faston 1-6.35mm(0.25in) or 2-2.8mm (0.11in).

Stroke of contact elements

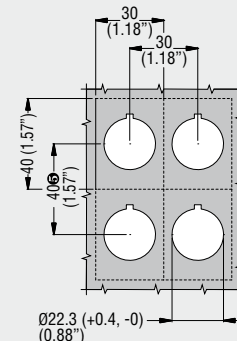


Maximum conductor cross section for screw terminals
 1 or 2 2.5mm² or AWG14 cables.

Mechanical and electrical endurance

Operating force: ≤0.5kg / 1.1lb (auxiliary contacts).
 Electrical life:

LPX C10	1,000,000 cycles
LPX CF10	1,000,000 cycles
LPX C01	1,000,000 cycles
LPX CF01	1,000,000 cycles
LPX C10A	600,000 cycles
LPX C01D	600,000 cycles.



Ⓢ When using Faston, pitch is 85mm / 3.35in minimum.

Certifications and compliance

Certifications obtained: UL Listed, for USA and Canada (File E93601), as Auxiliary Devices.
 Certifications pending at time of catalogue printing: CCC.
 Compliant with standards: IEC/EN 60947-1, IEC/EN 60947-5-1, UL508, CSA C22.2 n° 14.

Accessories and spare parts



LPX A140



LPX B104



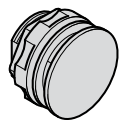
LPX B203



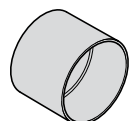
LPX BL105



LPX BL206



8 LM2T A130



8 LM2T A185

Order code	Description	Qty per pkg	Wt
		n°	[kg]
LPX A127	Transparent diffuser for double-touch buttons	10	0.001
LPX A140	Action plug for centre contact	50	0.001
LPX A150	Rod for mechanical reset button (l=150mm/5.91in)	10	0.006
LPX A170	Spare standard key set for selector switches or mushroom-head buttons	10	0.008
LPX A170R ^①	Spare key set for selector switches or mushroom head buttons, LPC.. R type	1	0.008

Flush cap for spring-return actuators.

LPX B102	Black	10	0.002
LPX B103	Green	10	0.002
LPX B104	Red	10	0.002
LPX B105	Yellow	10	0.002
LPX B106	Blue	10	0.002
LPX B108	White	10	0.002

Extended cap for spring-return actuators.

LPX B202	Black	10	0.003
LPX B203	Green	10	0.003
LPX B204	Red	10	0.003
LPX B205	Yellow	10	0.003
LPX B206	Blue	10	0.003
LPX B208	White	10	0.003

Flush lens for illuminated spring-return actuators.

LPX BL103	Green	10	0.002
LPX BL104	Red	10	0.002
LPX BL105	Yellow	10	0.002
LPX BL106	Blue	10	0.002
LPX BL108	White	10	0.002

Extended lens for illuminated spring-return actuators.

LPX BL203	Green	10	0.003
LPX BL204	Red	10	0.003
LPX BL205	Yellow	10	0.003
LPX BL206	Blue	10	0.003
LPX BL208	White	10	0.003

^① Versions with different key code. Complete with the numeric code of the key. The following versions are available: 421E, 458A, 520E, 3131A, 3433E. Example of complete code: LPX A170R421E.

Order code	Description	Qty per pkg	Wt
		n°	[kg]
8 LM2T A130	Threaded plug for unused drilled holes	10	0.007
8 LM2T A161	Ø30mm/1.2in hole size adapter set for 22mm/0.87in (use 2 per hole)	10	0.002
8 LM2T A185	Selector protection shroud for knob type only	10	0.004
8 LM2T A200	Socket spanner/wrench for fixing ring fitting	1	0.184