

**HEADERS  
FOR P.C.B.**

**CONNETTORI MASCHIO  
PER C.S.**

**CONNECTEURS MÂLE  
POUR C.I.**

**STIFTLISTE  
FÜR LEITERPLATTEN**

Pitch Pas	Passo Rastermaß	mm
Rated Voltage Tensione nominale	Tensione nominale Bemessungsspannung	V
Rated Current Intensità nominale	Corrente nominale Bemessungsstrom	A
Temperature Température	Temperatura Temperatur	°C
Housing Corps isolant	Corpo isolante Isolierkörper	

	IMQ	EN61984
	VDE	EN61984
	cUL	UL1059 + C22.2 n°158

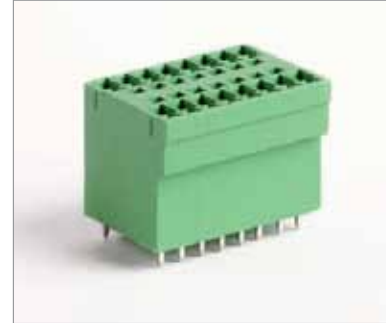
Poles Pôles	Poli Polzahl	X
Colours Couleurs	Colori Farben	Y
Other information Autres données	Altri dati Weitere Informationen	p.

How to order Référence de commande		Ordinazione Bestellschlüssel		
<b>MRT33 P7,62 /</b>	<b>X</b>	<b>...</b>	<b>Y</b>	<b>N...</b>
Type	Pitch	Poles	Version	Colors
Tipo	Passo	Poli	Versione	Colori
Type	Pas	Pôles	Version	Couleurs
Typ	Rastermaß	Polzahl	Version	Farben
				Numerazione Marquage Bedruckung

<b>MRT33</b>	<b>MRT33..SQ*</b>	<b>MRT33</b>	<b>MRT33..SQ*</b>
--------------	-------------------	--------------	-------------------

Single block - Blocco unico Monobloc - Einzelblock	Single block - Blocco unico Monobloc - Einzelblock
---	---

Poles · Poli · Pôles · Polzahl	2/6	Poles · Poli · Pôles · Polzahl	2/12
--------------------------------	-----	--------------------------------	------



7,62
500
10
110
PA - UL 94 V0

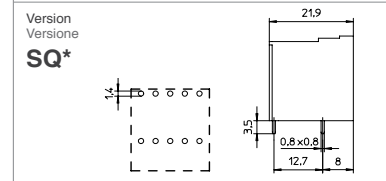
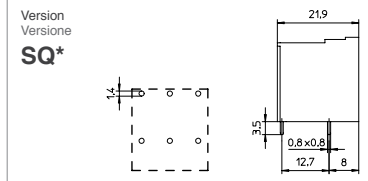
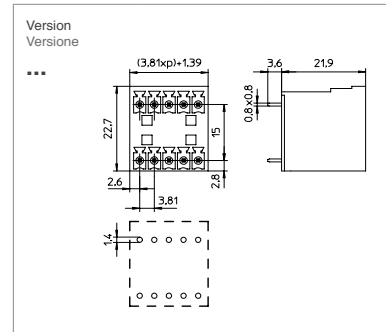
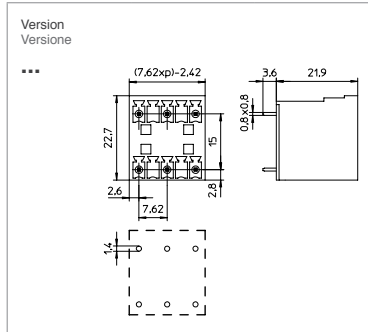
3,81
200
10
110
PA - UL 94 V0

V	A	mm /AWG
300	8	30 ÷ 16

V	A	mm /AWG
300	8	30 ÷ 16

min 2 - max 6
VE
D/B4

min 2 - max 12
VE
D/B4



\* SQ Version = Horizontal version