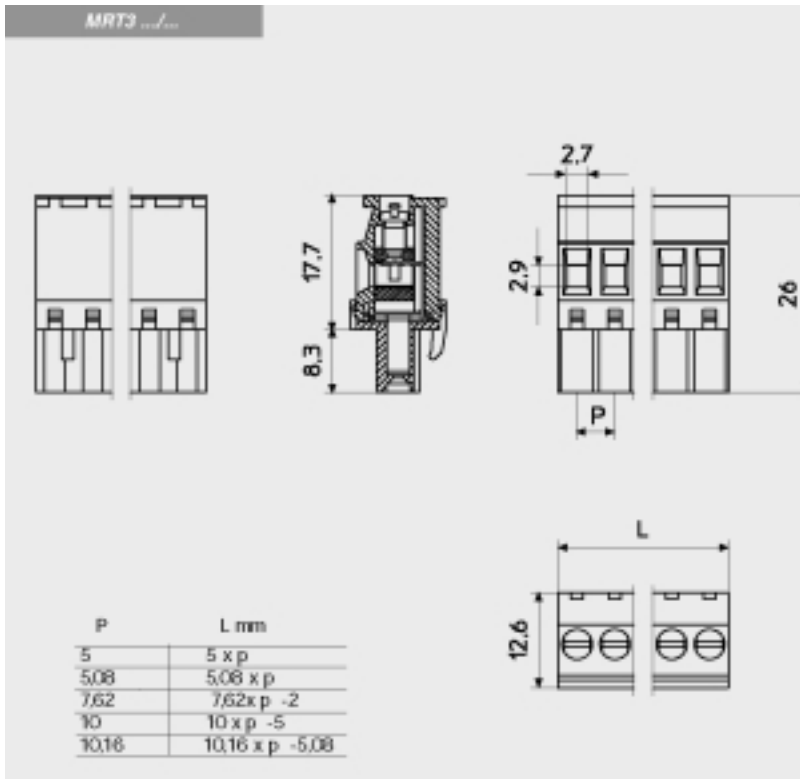
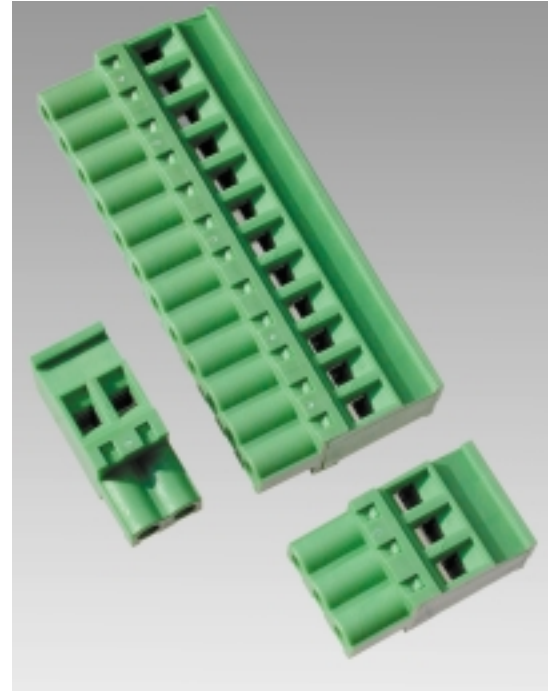


# Vertical Pluggable PCB Terminal Blocks

The MRT3 is a vertical pluggable terminal block, which provides for screw access on the top of the connector and wire entry on the side. They are available in 2 to 24 positions and in a wide range of pin spacings. The MRT3 provides wire entry to the connector opposite the molded-in scalloped polarization feature, which should be considered with the pin header to be used on the printed circuit board. The MRT3 pluggable terminal block has a UL rating of 12 amps, 300 volts and a wire range of 12 to 30 AWG.

## SPECIFICATIONS

Housing Material:	PA68 Polyamide, Flammable UL94V0
Housing Color:	Green
Screw:	Zinc Plated Steel
Clamp:	Nickel Plated Brass
Pin:	Tin Plated Brass
Testing torque:	4.4 in/lb
Wire range:	12-30 AWG
Nominal current:	12 A
Voltage:	300 V
Temperature Range:	-30° C to 85° C



Catalog #	No. of Positions	Length (mm)
MRT3P7.62-2VE	2	13.24
MRT3P7.62-3VE	3	20.86
MRT3P7.62-4VE	4	28.48
MRT3P7.62-5VE	5	36.10
MRT3P7.62-6VE	6	43.72
MRT3P7.62-7VE	7	51.34
MRT3P7.62-8VE	8	58.96
MRT3P7.62-9VE	9	66.58
MRT3P7.62-10VE	10	74.20
MRT3P7.62-11VE	11	81.82
MRT3P7.62-12VE	12	89.44

To locate additional product specifications and technical drawings go to [www.asi-ez.com](http://www.asi-ez.com)