

QBLOK Series

Distribution terminal boards

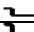



New product

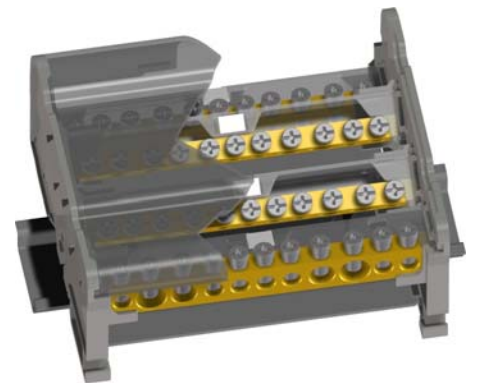


NEW

- Four bar configuration, with 2 \varnothing 9 mm holes, 2 \varnothing 7,5 mm holes and 7 \varnothing 5,4 mm holes
- Mounting onto PR/3, type "TH/35 " or PR/DIN, type "G32" rails according to IEC 60715 Std. or directly onto the panel
- Insulating supports in polyamide 6.6 and insulating cover in polycarbonate - UL94V-0 grade
- Insulating cover on each conducting body
- Feeding inputs in staggered position for easier conductor connection
- Marking possibility with CNU/8 or CNU/10 tags on each busbar
- IMQ approval in conformity to EN 60947-7-1 Std.

2 \varnothing 9 mm + 2 \varnothing 7,5 mm + 7 \varnothing 5,4 mm holes		Cat. No. QBLOK4125
height / width / thickness	 TH/35 7,5 mm	52 / 97 / 108
height / width / thickness	 TH/35 15 mm	56 / 97 / 108



TECHNICAL CHARACTERISTICS		
Function / type		Distribution 4-pole terminal board
Rated cross-section (mm ²)		35
Connecting capacity (\varnothing 9 mm hole):		
Flexible conductors (mm ²)	10 + 35	8-2 AWG
Rigid conductors (mm ²)	10 + 35	8-2 AWG
Max. flexible conductor with ferrule (mm ²) - ferrule type	25 - WP 250/29	
Connecting capacity (\varnothing 7.5 mm hole):		
Flexible conductors (mm ²)	10 + 25	8-4 AWG
Rigid conductors (mm ²)	10 + 25	8-4 AWG
Max. flexible conductor with ferrule (mm ²) - ferrule type	16 - WP160/22	
Connecting capacity (\varnothing 5,4 mm hole):		
Flexible conductors (mm ²)	2,5 + 6	14-10 AWG
Rigid conductors (mm ²)	2,5 + 6	14-10 AWG
Max. flexible conductor with ferrule (mm ²) - ferrule type	4 - WP40/16	
rated voltage / rated current / gauge	conf. to IEC 60947-7-1	500 V / 125 A / --
Short-time withstand current (I _{cw})	conf. to IEC 60947-7-1	4,2 kA (r.m.s value x 1s)
rated impulse withstand voltage / pollution degree		8 kV / 3
insulation stripping length (mm)		13
tightening torque value (test / recommended) (Nm)		1,8 / 2,2 Nm



Upper view of the terminal board with cut-away protection cover

APPROVALS



ACCESSORIES	Type	Cat. No.
Marking tags printed or blank	CNU/8/51/... CNU/10/51/...	NU0851... NU1051...
End bracket	BTU for PR/DIN and PR/3 BT/3-BTO for PR/3 only	BT005 BT003-BT007
Mounting rail according to IEC 60715 Std.	 PR/3/AC of steel  PR/3/AS same with slots	PR003 PR005

www.asi-ez.com
877-650-5160

PO BOX 1340 Mechanicsburg PA 17055