

3-phase switching power supply 400-500 Vac output power 2400 W

- 3-phase input 340...550 Vac or 2-phase with derating
- Short circuit, overload, over temperature, input and output overvoltage protections
- High inrush current to guarantee downstream overcurrent protections selectivity and to start-up heavy loads
- High efficiency and low dissipated power
- Suitable for applications in SELV and PELV circuits
- Input protected by ASSIL circuit (Surge Suppressor and Inrush Limiter)



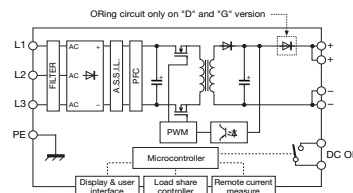
UL pending



NOTES

- The depth dimension includes the DIN rail clamp.
 (2) Version available upon request; for information call our sales department, local agent or representative
 (3) Over 45°C (113°F) apply a derating of about 40 W/°C
 (4) For this peak current, the output voltage does not drop more than 10% of the nominal value, but the current value, provided by the power supply also depends on the total line resistance.

BLOCK DIAGRAM



Special version for DC motors

| VERSIONS | Cod. XCSG2401C | Cod. XCSG2401D | APPLICATIONS |
|---|--|--|--|
| Output 12-15-24 Vdc 100 A redundant version | CSG2401C (2) | CSG2401D (2) | Series CSG2401 has an internal microprocessor that controls the many functions of the power supply, which can be programmed thanks to a user-friendly menu activated by 4 buttons on the front and shown on the front display. Front display: during normal operation, this shows the output voltage value and current used by the load; during programming, it allows for the choice of the various functions available. Input protection: the input circuit has been designed to avoid the most common problems seen in 3-phase networks. It therefore has: 1) a special ASSIL (Active Surge Suppressor and Inrush Limiter) circuit to protect it against overvoltage in accordance with VDE0160; 2) a PFC circuit failure (latched shutdown) circuit; 3) a system for controlling lack of phase that automatically reduces output power; 4) an auto-restart switch-off system in the event of overvoltage and undervoltage. Output protection: limit current can be selected as between 10% and 100% of rated current; protection type against overload and short circuit can be chosen from: 1) hiccup autoreset with limit current, equal to 150% of rated current and ON/OFF time equal to 5 secs./10 secs. (values can be altered manually); 2) constant power. Output signals: in addition to the "DC OK" and "FAULT" LEDs, the device also has: 1) an analogue signal 0...10V or 4...20mA that provides an indication of current used by the load; 2) a programmable alarm contact able to signal and record the exceeding of the various limits to a memory: output voltage, input current, output overload, overtemperature and other parameters that can be defined by programming. Additional functions: the following functions are also available: 1) battery charger: the acid lead battery charging function can be selected; 2) remote sensing (sense): this allows for the monitoring and compensation of voltage drops on long power supply lines; 3) remote switch-off: the power supply can be switched off and disabled from a remote position; 4) auxiliary voltage: auxiliary 12 Vdc is also available, regardless of the main output voltage status; 5) temperature control: by connecting an external sensor (NTC), the battery charge temperature can be controlled; 6) communication port: by means of an RS232 communication device, the power supply can be piloted and monitored from a remote position. |
| Output 24-48 Vdc 50 A redundant version | | | |
| INPUT TECHNICAL DATA | 3x 400-500 Vac (range 340...550 Vac) 47...63 Hz 4.2 A / 3.5 A < 2 A (with active inrush current limiter) > 0.92 circuit breaker: 3x 10 A C characteristic - fuse: 3x T10 A | | |
| OUTPUT TECHNICAL DATA | 12-15-24 Vdc 11.5...29 Vdc 100 A @ 45°C (3) 150 A for >5 s with Uout >90% Un (4) >150 A for 5 s (4) < 1% ≤ 200 mVpp >10 ms / >10 ms | 24-48 Vdc 23...56 Vdc 50 A @ 45°C (3) 75 A for >5 s with Uout >90% Un (4) >75 A for 5 s (4) < 1% ≤ 200 mVpp >10 ms / >10 ms | |
| GENERAL TECHNICAL DATA | >92% / >92% 200 W / 200 W -20...+60°C, with derating over 45°C / over temperature protection (3) 3 kVac / 60 s SELV output (5) 1.5 kVac / 60 s 0.5 kVac / 60 s EN60950, IEC950 EN 55011, EN 61000-3-2, EN61000-4-5 Surge immunity Level IV, VDE0160 >500'000 h acc. to SN 29500 / >150'000 h acc. to MIL Std. HDBK 217F II / 2 IP 20 IEC529, EN60529 4-6 mm² fixed screw type aluminium 2,8 kg (98,76 oz) vertical on rail, allow 60 mm spacing between adjacent components | | |
| MOUNTING ACCESSORIES | PR/3/AC, PR/3/AC/ZB, PR/3/AS, PR/3/AS/ZB | | |