

3-phase switching power supply 400-500 Vac output power 720 W

- Three-phase input 340...550 Vac or two-phase with derating
- Short circuit, overload, over temperature, input and output overvoltage protections
- High outrush current to guarantee downstream overcurrent protections selectivity and to start-up heavy loads
- High efficiency and low dissipated power
- Suitable for applications in SELV and PELV circuits
- Input protected by ASSIL circuit (Surge Suppressor and Inrush Limiter)

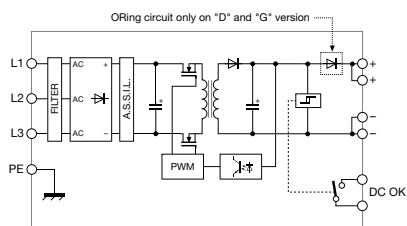


NOTES

The depth dimension includes the DIN rail clamp.

- (1) Version available upon request; for information call our sales department, local agent or representative
- (3) Over 50°C (122°F) apply a derating of about 6 W/°C
- (4) For this peak current, the output voltage does not drop more than 10% of the nominal value, but the current value, provided by the power supply also depends on the total line resistance.

BLOCK DIAGRAM



Special version for DC motors

VERSIONS

- Output 24 Vdc 30 A
- Output 24 Vdc 30 A redundant version
- Output 12...15 Vdc 60 A
- Output 48 Vdc 15 A

Cod. XCSG720C

CSG720C

(1)

CSG720D (1)

INPUT TECHNICAL DATA

- Input rated voltage
- Frequency
- Current @ Iout max. (Uin 400 / 500 Vac)
- Inrush peak current
- Power factor
- Internal protection fuse
- External protection on AC line

3x 400-500 Vac (range 340...550 Vac)
47...63 Hz
1.4 A / 1.1 A
< 30 A
> 0.75

circuit breaker: 3x 10 A C characteristic - fuse: 3x T 5 A

OUTPUT TECHNICAL DATA

- Output rated voltage
- Output adjustable range
- Continuous current
- Overload limit
- Short circuit peak current
- Load regulation
- Ripple @ nominal ratings
- Hold up time (Uin 400 / 500 Vac)
- Overload / short circuit protections
- Status display
- Alarm contact threshold
- Parallel connection
- Redundant parallel connection

	24 Vdc	48 Vdc
Output rated voltage	24...28 Vdc	45...55 Vdc
Output adjustable range	30 A @ 50°C (3)	15 A @ 50°C (3)
Continuous current	45 A for >5 s with Uout >90% Un (4)	22.5 A for >5 s with Uout >90% Un (4)
Overload limit	>50 A for 1.5 s (4)	>50 A for 1.5 s (4)
Short circuit peak current	< 1%	< 1%
Load regulation	≤ 200 mVpp	≤ 200 mVpp
Ripple @ nominal ratings	>10 ms / >15 ms	>10 ms / >15 ms
Hold up time (Uin 400 / 500 Vac)	hiccup at the overload limit with auto reset / over temperature protection / ASSIL circuit "DC OK" green LED / "DC OK" alarm contact/ "Overload" red LED	
Overload / short circuit protections	<21.6 Vdc	<43.2 Vdc
Status display	possible	possible
Alarm contact threshold	possible with external ORing diode	factory provided with internal ORing diode
Parallel connection		
Redundant parallel connection		

GENERAL TECHNICAL DATA

- Efficiency (Uin 400 / 500 Vac)
- Dissipated power (Uin 400 / 500 Vac)
- Operating temperature range
- Input/output isolation
- Input/ground isolation
- Output/ground isolation
- Standard/approvals
- EMC Standards
- MTBF @ 25°C @ nominal ratings
- Overvoltage category/Pollution degree
- Protection degree
- Connection terminal
- Housing material
- Approx. weight
- Mounting information

>91% / >92%
66 W / 60 W
-20...+60°C, with derating over 50°C / over temperature protection (3)
3 kVac / 60 s SELV output
2 kVac / 60 s
0.5 kVac / 60 s
EN50178, EN61558, EN60950, IEC950, UL508
EN61000-6-2, EN61000-6-4, EN61000-4-2, EN61000-4-3, EN61000-4-4, EN61000-4-5, EN61000-4-6, EN61000-4-11
>500'000 h acc. to SN 29500 / >150'000 h acc. to MIL Std. HDBK 217F
II / 2
IP 20 IEC 529, EN60529
6 mm² fixed screw type
aluminium
1.3 Kg (45.86 oz)
vertical on rail, allow 10 mm spacing between adjacent components

MOUNTING ACCESSORIES

- Mounting rail type according to IEC60715/TH35-7.5
- Mounting rail type according to IEC60715/G32

PR/3/AC, PR/3/AC/ZB, PR/3/AS, PR/3/AS/ZB