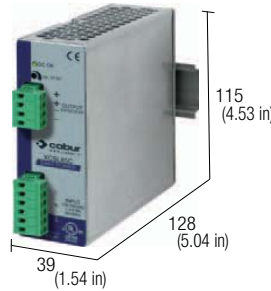


Single-phase switching power supply 120-230 Vac output power 85 W

- Single-phase input 90...264 Vac
- Short circuit, overload, over temperature, input and output overvoltage protections
- Suitable in civil automation and general applications in the installation of systems
- Suitable for applications in SELV and PELV circuits



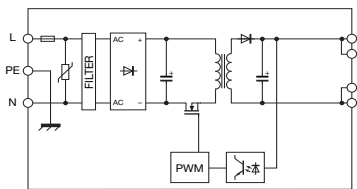
NOTES

The depth dimension includes the terminal blocks and the DIN clamp.

(3) Over 45°C (113°F) apply a derating of -0.06 A/°C

(4) For this peak current, the output voltage does not drop more than 10% of the nominal value, but the current value, provided by the power supply also depends on the total line resistance.

BLOCK DIAGRAM



VERSIONS

Output 24 Vdc 5 A
Output 24 Vdc 5

Cod. XCSL85C

CSL85C

INPUT TECHNICAL DATA

Input rated voltage
Frequency
Current @ nominal Iout (Uin 120 / 230 Vac)
Inrush peak current
Power factor
Internal protection fuse
External protection on AC line

120-230 Vac (range 90...264 Vac)
47...63 Hz
1.6A / 0.9 A ± 10%
< 20 A
> 0.65
T 2 A replaceable
circuit breaker: 4 A - C characteristic - fuse: T 4 A

OUTPUT TECHNICAL DATA

Output rated voltage
Output adjustable range
Continuous current
Overload limit
Short circuit peak current
Load regulation
Ripple @ nominal ratings
Hold up time @ In (Uin 120 / 230 Vac)
Overload / short circuit protections

24 Vdc
23...27.5 Vdc
3.5 A @ 45°C (3)
5.5 A for >30 s with Uout >90% Un (4)
9 A for 50 ms
< 1%
70 mVpp
>20 ms / >70 ms
hiccup at the overload limit with auto reset / over temperature protection
"DC OK" green LED

Status display
Alarm contact threshold
Parallel connection
Redundant parallel connection

possible
possible with external ORing diode

GENERAL TECHNICAL DATA

Efficiency (Uin 120 / 230 Vac)
Dissipated power (Uin 120 / 230 Vac)
Operating temperature range
Input/output isolation
Input/ground isolation
Output/ground isolation
Standard/approvals
EMC Standards
MTBF @ 25°C @ nominal ratings

>86% / >90%
14 W / 10 W
-20...+60°C, with derating over 45°C / over temperature protection (3)
3 kVac / 60 s SELV output
1.5 kVac / 60 s
0.5 kVac / 60 s
EN50178, EN61558, EN60950, IEC950, UL508
EN61000-6-2, EN61000-6-4, EN61000-4-2, EN61000-4-3,
EN61000-4-4, EN61000-4-5, EN61000-4-6, EN61000-4-11
>400'000 h acc. to SN 29500 / >100'000 h acc. to MIL Std.
HDBK 217F

Overvoltage category/Pollution degree
Protection degree
Connection terminal
Housing material
Approx. weight
Mounting information

II / 2
IP 20 IEC 529, EN60529
2.5 mm² pluggable screw type
aluminium and stainless steel
400 g (14.10 oz)
vertical on rail, allow 10 mm spacing between adjacent components

MOUNTING ACCESSORIES

Mounting rail type according to IEC60715/TH35-7.5
Mounting rail type according to IEC60715/G32

PR/3/AC, PR/3/AC/ZB, PR/3/AS, PR/3/AS/ZB