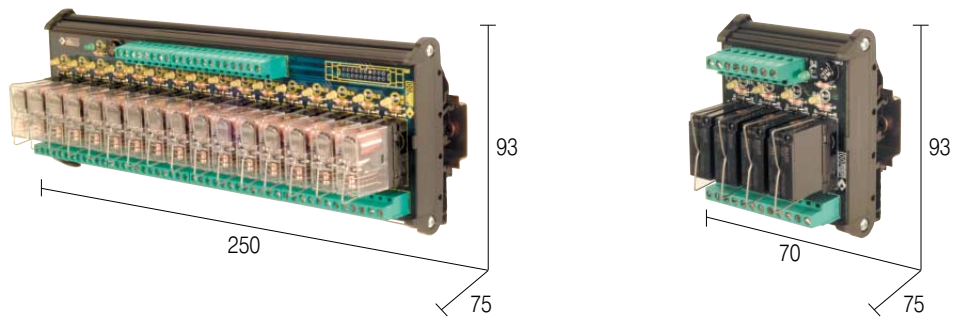


SPDT AC/DC Multi-relay modules

- DC and AC control voltage
- Positive or negative control voltage



BLOCK DIAGRAMS / NOTES

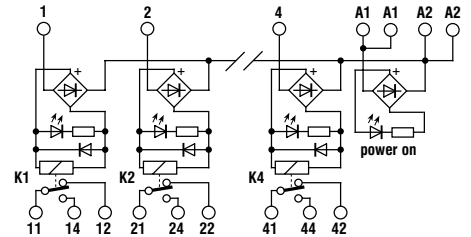
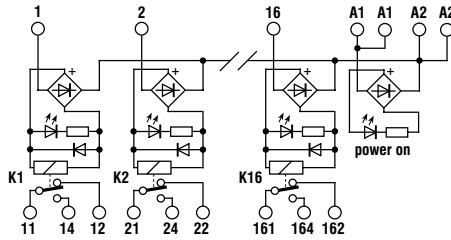
(1) Relay model is not binding, they may be modified without prior warning. The technical data reported refer to the user relays, for more detail see pages 68 through 73.

(2) Available upon request.

POWER SUPPLY

A1 = +	A2 = -	negative common
A1 = -	A2 = +	positive common

Block diagram



VERSION

Pluggable relay
Socket without relay

R161EAD

Cod. XR161EAD

(2)

R41E11A

Cod. XR041E1A

INPUT TECHNICAL DATA

Rated voltage	24 Vac/dc \pm 10%
Rated current (1 channel)	25 mA \pm 10%
Turn ON time	15 ms
Turn OFF time	20 ms
Terminals / connectors	terminal blocks 2.5 mm ²

Rated voltage	110 – 125 Vac/dc
Rated current (1 channel)	11 mA
Turn ON time	15 ms
Turn OFF time	10 ms
Terminals / connectors	terminal blocks 2.5 mm ²

OUTPUT TECHNICAL DATA

Type and number of contact	SPDT x 16 relay
Rated voltage	250 Vac
Rated current	10 A
Current breaking power	10 A
Terminals / connectors	terminal blocks 2.5 mm ²
Isolation between output terminals	1 K Vac / 60 s

Type and number of contact	SPDT x 4 relay
Rated voltage	250 Vac
Rated current	10 A
Current breaking power	10 A
Terminals / connectors	terminal blocks 2.5 mm ²
Isolation between output terminals	1 kVac / 60 s

GENERAL TECHNICAL DATA

Operating temperature	- 10 – 50°C
Coil / contact isolation	2.5 kVac / 60 s
Protection degree	IP 00
Reference standards	IEC 664-1, DIN VDE 0110.1
Pollution degree	2
Oversoltage category	3
Relay model (1)	OMRON G2R-1, NAIS JW1FSN, FINDER 40.31
Status display	

Operating temperature	- 10 – 50°C
Coil / contact isolation	2.5 kVac / 60 s
Protection degree	IP 00
Reference standards	IEC 664-1, DIN VDE 0110.1
Pollution degree	2
Oversoltage category	3
Relay model (1)	FINDER 40.31.125 VDC
Status display	

Housing material	polyamide UL94V-0
Approximative weight	688 g
Mounting information	adjacent without gap
Mounting rail according to IEC60715/TH35	PR/3/AC - PR/3/AS
Mounting rail according to IEC60715/G32	PR/DIN/AC - PR/DIN/AS - PR/DIN/AL

Housing material	polyamide UL94V-0
Approximative weight	192 g
Mounting information	adjacent without gap
Mounting rail according to IEC60715/TH35	PR/3/AC - PR/3/AS
Mounting rail according to IEC60715/G32	PR/DIN/AC - PR/DIN/AS - PR/DIN/AL