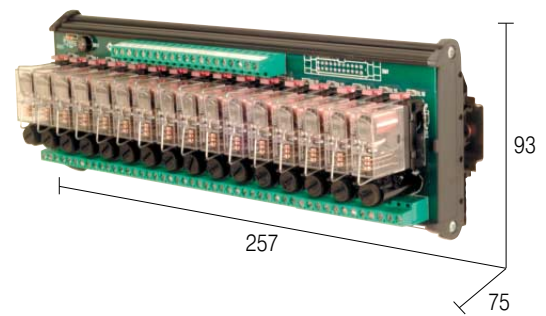
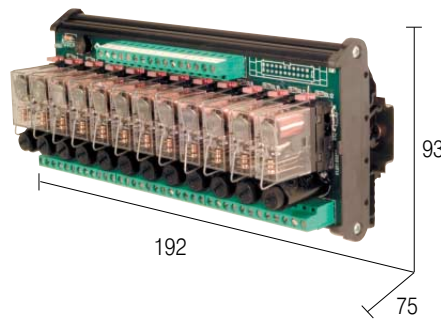


# Multi-relay modules with protection fuse

- Output contact with protection fuse
- AC/DC control voltage
- Positive or negative control voltage



## POWER SUPPLY

A1 = +	A2 = -	negative common
A1 = -	A2 = +	positive common

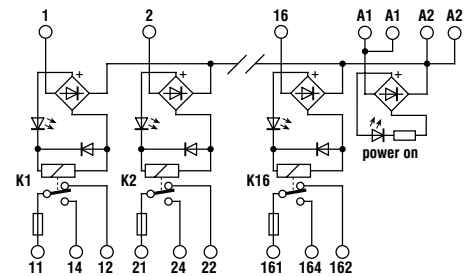
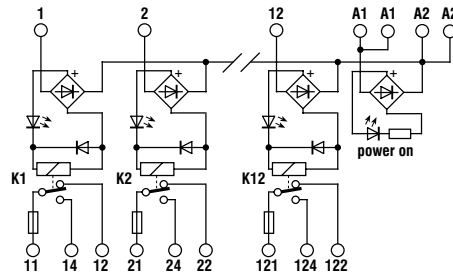
## BLOCK DIAGRAMS / NOTES

(1) Relay model is not binding, they may be modified without prior warning. The technical data reported refer to the user relays, for more detail see pages 68 through 73.

(3) The interface is supplied without a fuse and the screw plug of the fuse-holder is provided in a bag inside the packaging.

The fuse must be dimensioned according to load. The max. value of 6.3 A is referred to EN60127-complying fuses and the homologation rated current of the fuse-holder. Fuses of a higher value may damage the fuse-holder and module.

## Block diagram



## VERSION

Pluggable relay

**R121U24F**

Cod. XR121U24F

**R161U24F**

Cod. XR161U24F

## INPUT TECHNICAL DATA

Rated voltage	24 Vac / dc $\pm$ 10%
Rated current (1 channel)	20 mA $\pm$ 10%
Turn ON time	15 ms
Turn OFF time	10 ms
Terminals / connectors	terminal blocks 2.5 mm <sup>2</sup>

Rated voltage	24 Vac / dc $\pm$ 10%
Rated current (1 channel)	20 mA $\pm$ 10%
Turn ON time	15 ms
Turn OFF time	10 ms
Terminals / connectors	terminal blocks 2.5 mm <sup>2</sup>

## OUTPUT TECHNICAL DATA

Type and number of contact	SPDT x 12 relay
Rated voltage	250 Vac
Rated current	10 A
Current breaking power	10 A
Terminals / connectors	terminal blocks 2.5 mm <sup>2</sup>
Isolation between output terminals	1 K Vac / 60 s
Current of the fuse max.	6.3 A / 5 x 20 (3)
Current of the fuse holder max.	10 A / 250 Vac

Type and number of contact	SPDT x 16 relay
Rated voltage	250 Vac
Rated current	10 A
Current breaking power	10 A
Terminals / connectors	terminal blocks 2.5 mm <sup>2</sup>
Isolation between output terminals	1 K Vac / 60 s
Current of the fuse max.	6.3 A / 5 x 20 (3)
Current of the fuse holder max.	10 A / 250 Vac

## GENERAL TECHNICAL DATA

Operating temperature	- 10 – 50°C
Coil / contact isolation	2.5 kVac / 60 s
Protection degree	IP 00
Reference standards	IEC 664-1, DIN VDE 0110.1
Pollution degree	2
Overvoltage category	3
Relay model (1)	OMRON G2R-1, NAIS JW1FSN; FINDER 40.31
Status display	LED

Operating temperature	- 10 – 50°C
Coil / contact isolation	2.5 kVac / 60 s
Protection degree	IP 00
Reference standards	IEC 664-1, DIN VDE 0110.1
Pollution degree	2
Overvoltage category	3
Relay model (1)	OMRON G2R-1, NAIS JW1FSN; FINDER 40.31
Status display	LED

Housing material	polyamide UL94
Approximative weight	577 g
Mounting information	adjacent without gap
Mounting rail according to IEC60715/TH35	<b>PR/3/AC - PR/3/AS</b>

Housing material	polyamide UL94V-0
Approximative weight	770 g
Mounting information	adjacent without gap
Mounting rail according to IEC60715/TH35	<b>PR/3/0AC - PR/3/AS</b>

Mounting rail according to IEC60715/G32	<b>PR/DIN/AC - PR/DIN/AS - PR/DIN/AL</b>
---	--

Mounting rail according to IEC60715/G32	<b>PR/DIN/AC - PR/DIN/AS - PR/DIN/AL</b>
---	--