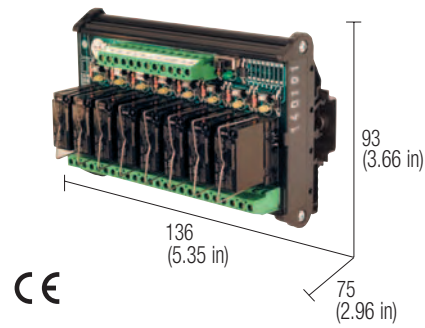


24 Vac/dc relay modules universal control voltage with test push button

- DC control voltage
- Positive or negative control voltage
- Status LED display
- Pluggable relay
- Test with push button and micro switch



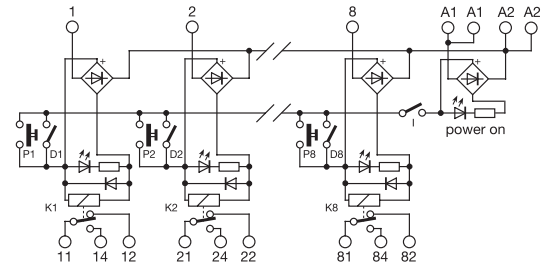
NOTES

The height dimension includes 35 mm DIN rail.
 (1) Relay model is not binding, they may be modified without prior warning. The technical data shown here is to be considered typical.
 (2) They replace XRP08124 and XRD08124 models.

POWER SUPPLY

A1 = +	A2 = -	negative common
A1 = -	A2 = +	positive common
A1 = ~	A2 = ~	AC power supply

BLOCK DIAGRAM



- P = test button
- D = dip-switch
- IG = master switch (disable the push button and dip-switch)

VERSIONS

With test push button and dip switch

Cat. No. XRMP081CM (2)

RMPO81CM

INPUT TECHNICAL DATA

Rated voltage	24 Vac/dc ± 10%
Rated current (1 channel)	22 mA ± 10%
Turn ON time	15 ms
Turn OFF time	5 ms
Protection circuit	bridge rectifier

OUTPUT TECHNICAL DATA

Type and number of contacts	SPDT AgSnO ₂ per 8 relé
Nominal load (resistive)	12 A / 250 Vac
Current breaking power	12 A
Current of the fuse max.	—

GENERAL TECHNICAL DATA

Operating temperature range	-10...+50°C
Coil/contact isolation	2.5 kVac / 60 s
Isolation between output terminals	1 kVac / 60 s (between open contact)
Protection degree	IP 00 IEC 529, EN60529
Overtoltage category / Pollution degree	III / 2
Reference Standard	IEC 664-1, DIN VDE 0110.1
Status display	green LED / yellow LED
Connection terminal	2.5 mm ² fixed screw type
Housing material	UL94V-0 plastic material
Approx. weight	350 g (12.36 oz)
Mounting information	vertical on rail adjacent without gap

MOUNTING ACCESSORIES

Mounting rail type according to IEC60715/TH35	PR/3/AC, PR/3/AC/ZB, PR/3/AS, PR/3/AS/ZB
Mounting rail type according to IEC60715/G32	PR/DIN/AC - PR/DIN/AS - PR/DIN/AL
Replacement relay (1)	Cat. No. 8904001
Screw type jumper	red —
	white —
	blue —

This series of products allows piloting with alternating and direct current, in which case only positive control is possible. We also recommend cutting JP jumpers if piloting takes place via low-current devices (e.g. proximity sensors).

On both versions it is possible the temporary turn on of the relay by pushing the relative button.

On model RD08124 it is possible to switch on the relays permanently with a Dip-Switch.

