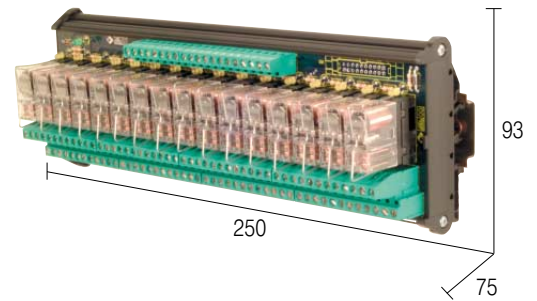
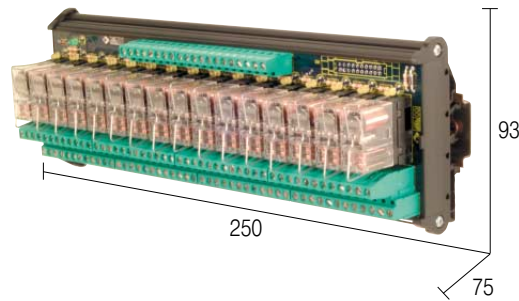


# DPDT DC Multi-relay modules

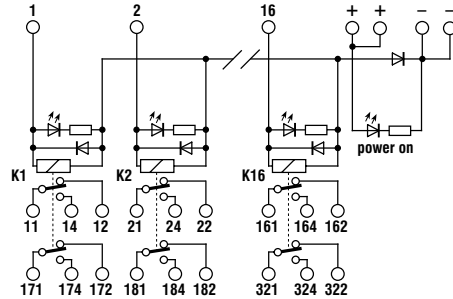


## BLOCK DIAGRAMS / NOTES

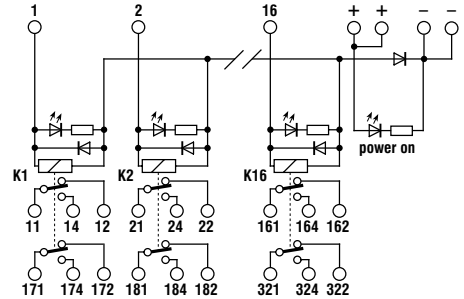
(1) Relay model is not binding, they may be modified without prior warning. The technical data reported refer to the user relays, for more detail see pages 68 through 73.

(2) Available upon request.

### Block diagram



### Block diagram



## VERSION

Pluggable relay, negative common  
Pluggable relay, positive common  
Socket without relay, negative common

**R162E24**  
**R162E24P**  
**Z16224D**

Cod. XR162E24  
Cod. XR162E24P  
Cod. XZ16224D

**R162E48** (2)

Cod. XR162E48

## INPUT TECHNICAL DATA

Rated voltage 24 Vdc  $\pm$  10%  
Rated current (1 channel) 20 mA  $\pm$  10%  
Turn ON time 15 ms  
Turn OFF time 5 ms  
Terminals / connectors terminal blocks 2.5 mm<sup>2</sup>

48 Vdc  $\pm$  10%  
16 mA  $\pm$  10%  
15 ms  
5 ms  
terminal blocks 2.5 mm<sup>2</sup>

## OUTPUT TECHNICAL DATA


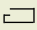
Type and number of contact DPDT x 16 relay  
Rated voltage 250 Vac  
Rated current 5 A  
Current breaking power 5 A  
Terminals / connectors terminal blocks 2.5 mm<sup>2</sup>  
Isolation between output terminals 1 K Vac / 60 s

DPDT x 16 relay  
250 Vac  
5 A  
5 A  
terminal blocks 2.5 mm<sup>2</sup>  
1 K Vac / 60 s

## GENERAL TECHNICAL DATA

Operating temperature - 10 – 50°C  
Coil / contact isolation 2.5 kVac / 60 s  
Protection degree IP 00  
Reference standards IEC 664-1  
Pollution degree 2  
Overvoltage category 3  
Relay model (1) OMRON G2R-2, NAIS JW2FSN, FINDER 40.52  
Status display

- 10 – 50°C  
2.5 kVac / 60 s  
IP 00  
IEC 664-1  
2  
3  
-

Housing material polyamide UL94V-0  
Approximative weight 811 g  
Mounting information adjacent without gap  
Mounting rail  **PR/3/AC - PR/3/AS**  
according to IEC60715/TH35  
Mounting rail  **PR/DIN/AC - PR/DIN/AS - PR/DIN/AL**  
according to IEC60715/G32

LED  
polyamide UL94V-0  
811 g  
adjacent without gap  
**PR/3/AC - PR/3/AS**  
**PR/DIN/AC - PR/DIN/AS - PR/DIN/AL**